

SOU SERIES

Side Click Type Tactile Switch

MITSUMI

TACTILE SWITCHES

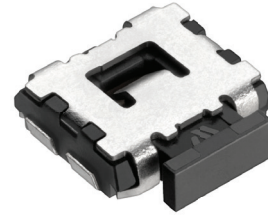
SLIDE SWITCHES

SWITCH SHEETS

SWITCH KITS

FEATURES

- Smaller mounting area
- Stainless steel dome material for long life and good click feel
- Suitable for controllers with side click in small equipment
- Suitable for SMT reflow soldering
- Original grounding structure can prevent flux from entering



APPLICATIONS

- Smartphones
- Digital cameras
- Gaming devices
- Other small electronic devices - consumer, medical

PART NUMBER CODE

Series	Earth Terminal	Height	Operating Force	Standard	Boss, Button	Packaging
SOU	2 (with)	4 (1.0mm)	2 (1.6N) 8 (2.0N) 4 (2.4N)	H	S (with) N (without)	T (taping)

SPECIFICATIONS

Switch Type	SPST	Tactile
Electrical Characteristics	Rating (Resistive Load)	DC12V, 50mA
	Contact Resistance	1Ω or less
	Insulation Resistance	10MΩ or more
	Withstand Voltage	1 minute at AC 100V
Life	SOU-242HST, SOU-242HNT	100,000 times
	SOU-244HNT, SOU-244HST	100,000 times
	SOU-248HNT, SOU-248HST	100,000 times

TYPE

Model Name	Model No.	Operating Force	Travel	Boss	Pcs/Reel
SOU-242HST	R 666939	1.6N	0.2mm	With	5,000
SOU-242HNT	R 666994	1.6N	0.2mm	Without	5,000
SOU-248HST	R 667270	2.0N	0.2mm	With	5,000
SOU-248HNT	R 667271	2.0N	0.2mm	Without	5,000
SOU-244HST	R 667799	2.4N	0.2mm	With	5,000
SOU-244HNT	R 667823	2.4N	0.2mm	Without	5,000

DIMENSIONS

