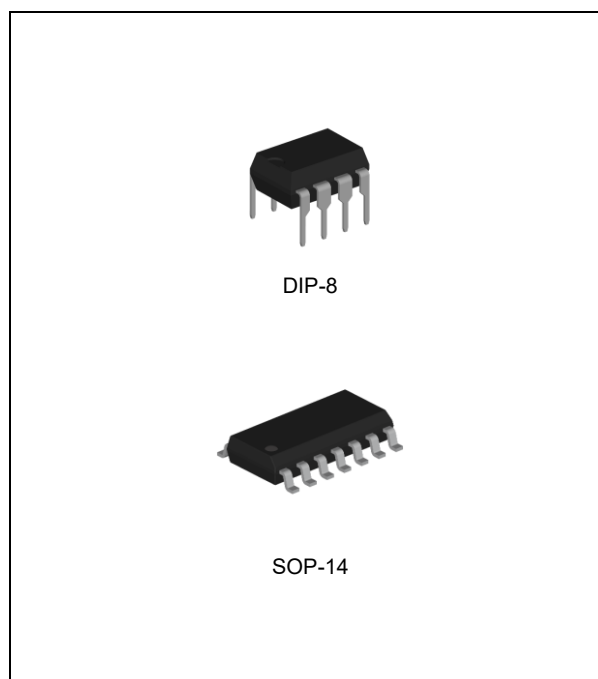


FEATURES

- 3.3V, 5.0V, 12V and Adjustable Output Versions
- Adjustable Version Output Voltage Range
- Wide Input Voltage Range
- Guaranteed 0.5A Output Current
- 52kHz Fixed Frequency Internal Oscillator
- Voltage mode non-synchronous PWM control
- On/Off shutdown control input
- Thermal Shutdown and Current Limit Protection
- Moisture Sensitivity Level 3 for SMD packages

APPLICATION

- Simple High-Efficiency Step-Down(Buck) Regulator
- Efficient Pre-Regulator for Linear Regulators
- On-Card Switching Regulators
- Positive to Negative Converter(Buck-Boost)

**ORDERING INFORMATION**

Device	Package
LM2574N-X.X	DIP-8
LM2574D-X.X	SOP-14

X.X = Output Voltage = 3.3, 5.0, 12, ADJ

DESCRIPTION

The LM2574 series are monolithic ICs designed for a step-down DC/DC converter, capable of driving 0.5A load without an additional transistor. It saves a board space. The external shutdown function is controlled by a logic level and then the circuit comes into the standby mode. The internal compensation makes the feedback control with good line and load regulation characteristics without an external design. Regarding the protection functions – the thermal shutdown prevents circuit damage during the over temperature operation and the current limit is against overcurrent operation of the output switch. Other features include a guaranteed $\pm 4\%$ tolerance on output voltage within specified input voltages and output load conditions, and $\pm 10\%$ on the oscillator frequency. External shutdown is included, featuring 50 μ A (typical) standby current.

The fixed output voltage version includes 3.3V, 5V, 12V devices, while the adjustable version voltages range from 1.23V to 37V. The LM2574 is available in DIP-8 and SOP-14 package.

ABSOLUTE MAXIMUM RATINGS (Note 1)

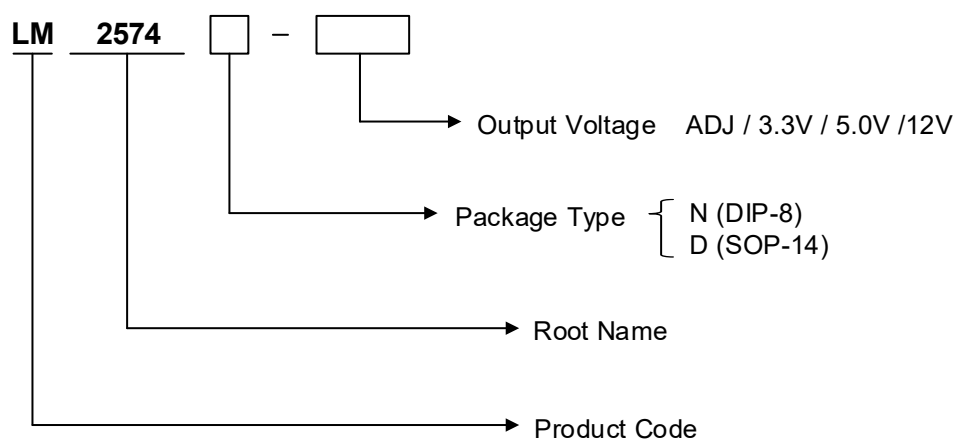
Characteristic	Symbol	MIN.	MAX.	UNIT
Maximum Input Supply Voltage	V_{IN}	-	45	V
ON/OFF Pin Input Voltage	$V_{ON/OFF}$	-0.3	25	V
Output Voltage to Ground	V_{OUT}	-1.0	-	V
Storage Temperature Range	T_{STG}	-60	150	$^{\circ}$ C
Junction Temperature Range	T_J	-	150	$^{\circ}$ C

RECOMMENDED OPERATING CONDITIONS

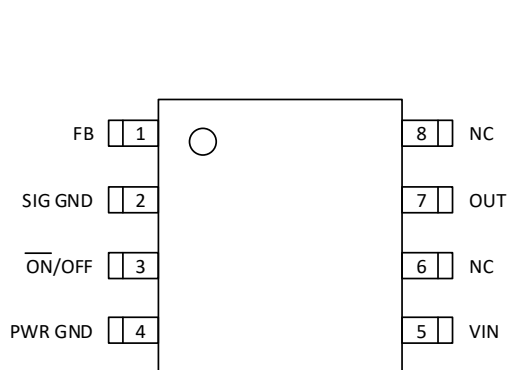
CHARACTERISTIC	SYMBOL	MIN.	MAX.	UNIT
Supply Voltage	V_{IN}	-	40	V
Load Current	I _{LOAD}	-	0.5	A
Junction Temperature	T_J	-40	125	°C

ORDERING INFORMATION

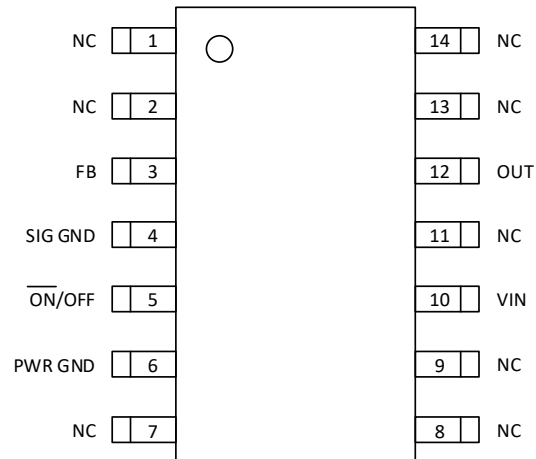
V _{OUT}	Package	Order No.	Description	Status
ADJ	DIP-8	LM2574N-ADJ	0.5A, Adjustable, 52kHz, On/Off	Active
	SOP-14	LM2574D-ADJ	0.5A, Adjustable, 52kHz, On/Off	Contact Us
3.3V	DIP-8	LM2574N-3.3	0.5A, Fixed, 52kHz, On/Off	Contact Us
	SOP-14	LM2574D-3.3	0.5A, Fixed, 52kHz, On/Off	Contact Us
5.0V	DIP-8	LM2574N-5.0	0.5A, Fixed, 52kHz, On/Off	Contact Us
	SOP-14	LM2574D-5.0	0.5A, Fixed, 52kHz, On/Off	Contact Us
12V	DIP-8	LM2574N-12	0.5A, Fixed, 52kHz, On/Off	Contact Us
	SOP-14	LM2574D-12	0.5A, Fixed, 52kHz, On/Off	Contact Us



PIN CONFIGURATION



DIP-8

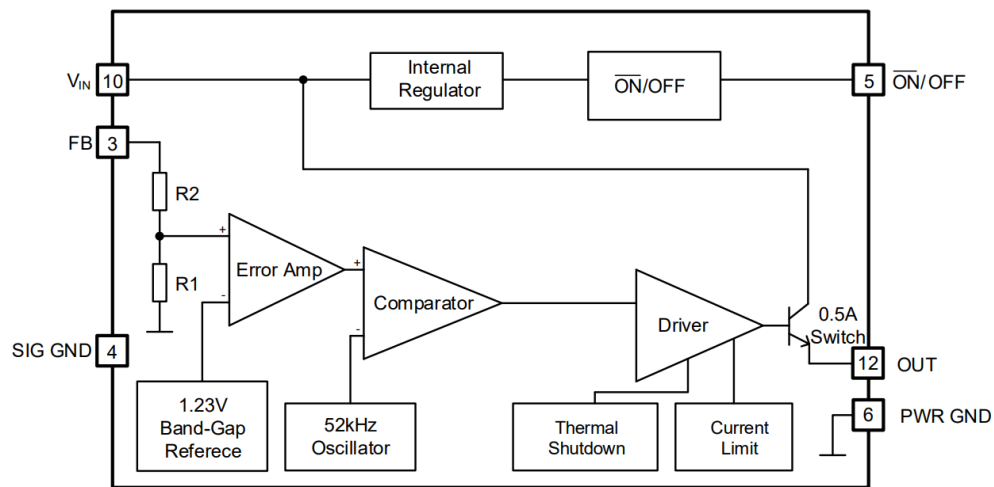


SOP-14

PIN DESCRIPTION

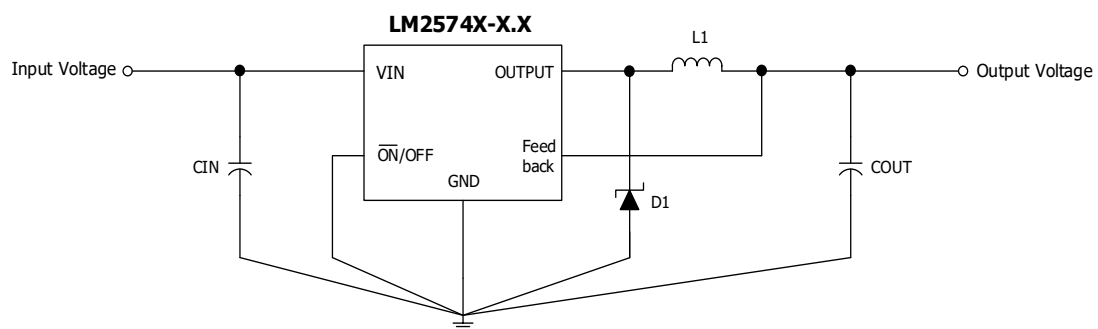
Package		Symbol	Description
DIP-8	SOP-14		
1	3	FB	Output voltage feedback control
2	4	SIG GND	Signal ground
3	5	ON/OFF	On/Off Shutdown
4	6	PWR GND	Power ground
5	10	VIN	Input Supply
7	12	OUT	Switching output
6, 8	1, 2, 7, 8, 9, 11, 13, 14	NC	-

BLOCK DIAGRAM

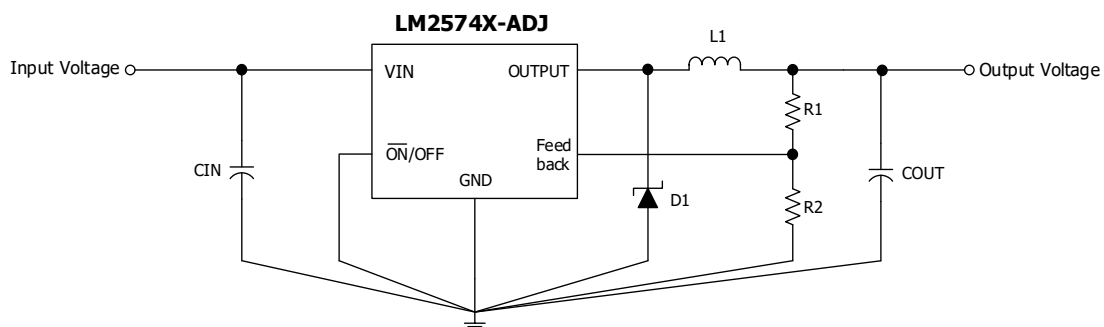


TYPICAL APPLICATION

- Fixed Output Voltage Version



- Adjustable Output Voltage Version



0.5A, 52KHz, Step-Down Switching Regulator

LM2574

ELECTRICAL CHARACTERISTICS

Specification with standard type face are for $T_J=25^{\circ}\text{C}$, and those with **boldface type** apply over **full Operating Temperature Range**. Unless specified otherwise, $V_{IN}=12\text{V}$ for the 3.3V, 5V, and Adjustable versions and $V_{IN}=25\text{V}$ for the 12V version. $I_{LOAD}=0.2\text{A}$

Characteristic	Symbol	Test Condition		Min. (Note 3)	Typ. (Note 2)	Max. (Note 3)	Unit
SYSTEM PARAMETERS (Note 4)							
Efficiency	η	LM2574X-ADJ	$V_{IN}=12V, I_{LOAD}=0.5A, V_{OUT}=5V$		77		%
		LM2574X-3.3	$V_{IN}=12V, I_{LOAD}=0.5A$		72		
		LM2574X-5.0	$V_{IN}=12V, I_{LOAD}=0.5A$		77		
		LM2574X-12	$V_{IN}=15V, I_{LOAD}=0.5A$		88		
Output Voltage	V_{OUT}	LM2574X-3.3	$4.75V \leq V_{IN} \leq 40V$	3.168	3.3	3.432	V
			$0.1A \leq I_{LOAD} \leq 0.5A$	3.135		3.465	
		LM2574X-5.0	$7V \leq V_{IN} \leq 40V$	4.800	5.0	5.200	
			$0.1A \leq I_{LOAD} \leq 0.5A$	4.750		5.250	
		LM2574X-12	$15V \leq V_{IN} \leq 40V$	11.520	12	12.480	
			$0.1A \leq I_{LOAD} \leq 0.5A$	11.400		12.600	
Feedback Voltage	V_{FB}	LM2574X-ADJ	$7V \leq V_{IN} \leq 40V$	1.193	1.23	1.267	V
			$0.1A \leq I_{LOAD} \leq 0.5A$	1.180		1.280	
DEVICE PARAMETERS							
Feedback Bias Current	I_{FB}	Adjustable Version Only $V_{FB}=1.3V$			100	nA	
					500		
Oscillator Frequency	F_{OSC}	(Note 5)	47	52	58	kHz	
			42		63		
Saturation Voltage	V_{SAT}	$I_{OUT}=0.5A$ (Note 6, 7)			1.2	V	
					1.4		
Max. Duty Cycle (ON)	DC	(Note 7)		98		%	
Current Limit	I_{CL}	Peak Current (Note 6, 7)	0.7		1.6	A	
			0.65		1.8		
Output Leakage Current	I_L	$V_{OUT}=0V$ (Note 6, 8)			2	mA	
		$V_{OUT}=-1V$ (Note 9)			30	mA	
Quiescent Current	I_Q	(Note 8)			10	mA	
Shutdown Current	$I_{SHUTDOWN}$	$V_{FB}=0V, V_{ON/OFF}=5V(OFF)$ (Note 9)			200	μA	
ON/OFF Control							
ON/OFF Pin Logic Input Threshold voltage	V_{IH}	$V_{FB}=0V$, High (Regulator OFF)	2.4			V	
	V_{IL}	$V_{FB}=0V$, Low (Regulator ON)			0.8		
ON/OFF Pin Logic Input current	I_{IH}	$V_{FB}=0V, V_{ON/OFF}=5.0V$ (regulator OFF)			30	μA	
	I_{IL}	$V_{FB}=0V, V_{ON/OFF}=0V$ (regulator ON)			10		

Note 1: Absolute Maximum Rating indicate limits beyond which damage to the device may occur. Operating Ratings indicate condition for which the device is intended to be functional, but do not guarantee specific performance limits. For guaranteed specifications and test conditions, see the Electrical Characteristics.

Note 2: Typical numbers are at 25°C and represent the most likely norm.

Note 3: All limits guaranteed at room temperature (standard type face) and at temperature extremes (**bold type face**).

Note 4: External components such as the schottky diode, inductor, input and output capacitors, and voltage programming resistors can affect switching regulator system performance. When the LM2574 is used as shown in the typical circuit, system performance will be as shown in system parameters section of Electrical Characteristics.

Note 5: The switching frequency is reduced when the second stage current limit is activated. The amount of reduction is determined by the severity of current over-load.

Note 6: No diode, inductor or capacitor connected to output pin.

Note 7: Feedback pin removed from output and connected to 0V to force the output transistor switch ON.

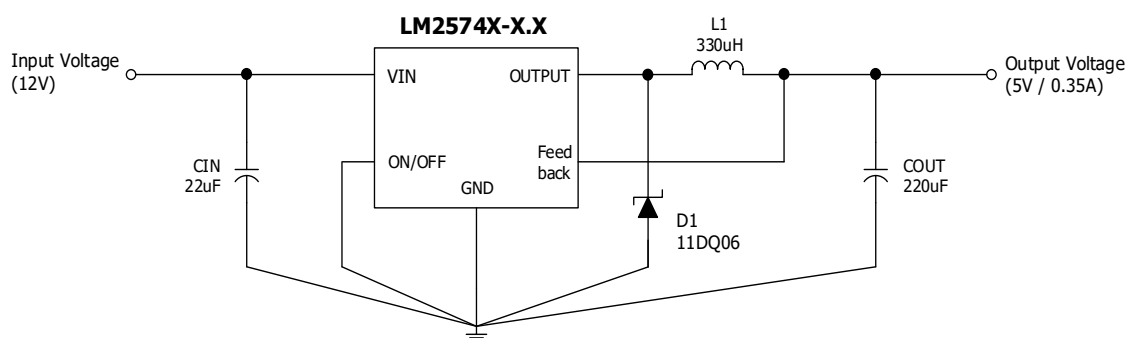
Note 8: Feedback pin removed from output and connected to 12V for the 3.3V, 5V, and the ADJ version, and 25V for the 12V version, to force the output transistor switch OFF.

Note 9: VIN=40V.

APPLICATION INFORMATION

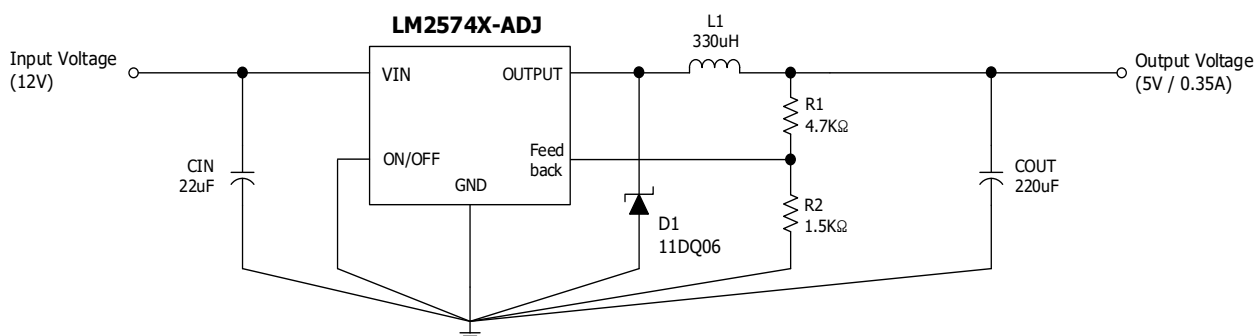
As in any switching regulator, layout is very important. Rapidly switching currents associated with wiring inductance generate voltage transients which can cause problems. For minimal inductance and ground loops, the length of the wires should be kept as short as possible. Single-point grounding or ground plane construction should be used for best results. Keep the feedback wiring away from the inductor flux.

- Fixed Output Voltage Version (VOUT=5V)



[Figure 1]

- Adjustable Output Voltage Version (VOUT=5V)



[Figure 2]

$$* V_{OUT} = V_{FB} \left(1 + \frac{R1}{R2}\right), \text{ Where } V_{FB}=1.23V, R2 \text{ Between } 1K \text{ and } 5K$$

TYPICAL OPERATING CHARACTERISTIC

T.B.D.

REVISION NOTICE

The description in this datasheet is subject to change without any notice to describe its electrical characteristics properly.