

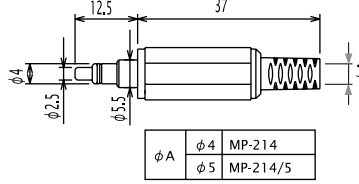


DC PLUGS & JACKS

EIAJ RC5321 JACK FOR LOW VOLTAGE DC POWER SUPPLY OUTPUT AND MATING PLUG DC電源出力用プラグ・ジャック 電圧区分4 適合品 TYPE4 RATING 定 格 : DC13.5V 2A

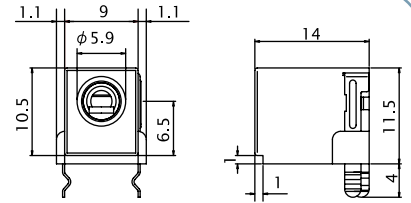
No. MP-214

EIAJ RC-5321 CLASS4 電圧区分4 (DC13.5V 2A)



No. M04-510DJ

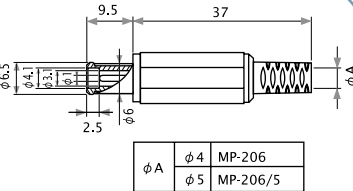
DC JACK FOR P.C.B. EIAJ RC-5321 CLASS4 電圧区分4 (DC13.5V 2A)



EIAJ RC5322 TO ELECTRONIC EQUIPMENT USED IN A CAR 車載機器用 RATING 定 格 : DC24V 2A

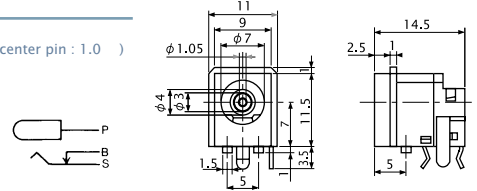
No. MP-206

6.5 x 3.1(center pin : 1.0) DC PLUG (DC24V 2A)



No. MJ-300J

DC JACK FOR P.C.B. PLUG TYPE: 6.5 x 3.1(center pin : 1.0) (DC24V 2A)



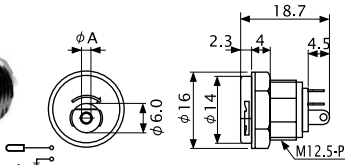
LOCKABLE DC PLUGS & JACKS ロック式DCプラグ&ジャック

No. MJ-10LR

TO MATE WITH MP-121AR MP-121MR & MC1210LR (DC12V 0.5A)



LOCKABLE DC JACK FOR PANEL MOUNT



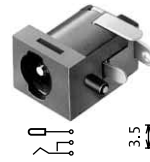
No. MJ-11LR

TO MATE WITH MP-122AR MP-122MR & MC1220LR (DC12V 1A)

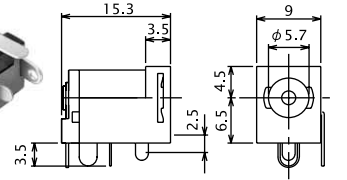


No. MJ-179LR

TO MATE WITH MP-121AR MP-121MR & MC1210LR (DC12V 0.5A)



LOCKABLE DC SOCKET FOR P.C.B.

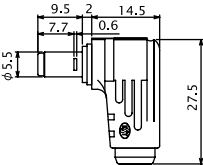


No. MP-121LL

TO MATE WITH MJ-179R & MJ-10LR (DC12V 0.5A)



DC-PLUG WITH LOCKING DETENT



No. MP-122LL

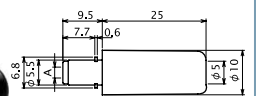
TO MATE WITH MJ-180LR & MJ-11LR (DC12V 1A)



No. MP-121AR

TO MATE WITH MJ-179R & MJ-10LR (DC12V 0.5A)

DC-PLUG WITH LOCKING DETENT



No. MP-122AR

TO MATE WITH MJ-180LR & MJ-11LR (DC12V 1A)

No. MC-1210LR

TO MATE WITH MJ-179R & MJ-10LR (DC12V 0.5A)

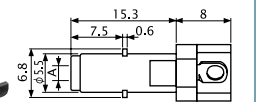
DC ADAPTER CABLE FOR LOCKABLE DC JACK L=1800



No. MP-121MR

TO MATE WITH MJ-179R & MJ-10LR (DC12V 0.5A)

DC-PLUG WITH LOCKING DETENT FOR MOLDING



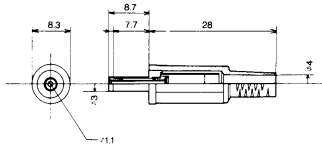
No. MP-122MR

TO MATE WITH MJ-180LR & MJ-11LR (DC12V 1A)

PLUG TYPE 3.0 x 1.0

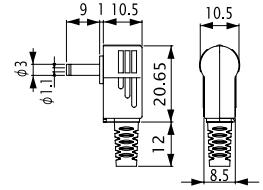
No. MP-121PS

3.0 x 1.1 DC PLUG (DC12V 0.5A)



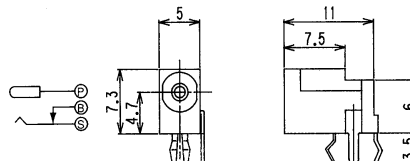
No. MP-121PN

3.0 x 1.1 RIGHT ANGLE DC PLUG (DC12V 0.5A)



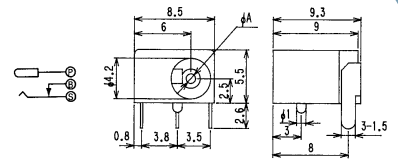
No. MJ-25N

DC JACK FOR P.C.B. PLUG TYPE: 3.0 x 1.1 (DC6V 0.5A)



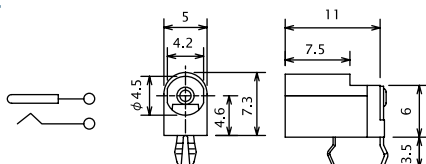
No. MJ-82-2

DC JACK FOR P.C.B. PLUG TYPE: 3.0 x 1.1 (DC6V 0.5A)



No. MJ-442DJ

DC JACK FOR P.C.B. PLUG TYPE: 3.0 x 1.1 (DC6V 0.5A)



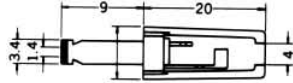


DC PLUGS & JACKS

PLUG TYPE 3.4 × 1.4

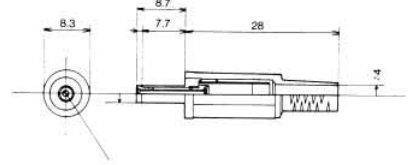
No. MP-121WK

3.4 × 1.4 DC PLUG
(DC12V 0.5A)



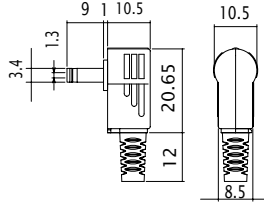
No. MP-121WH

3.4 × 1.4 DC PLUG
(DC12V 0.5A)



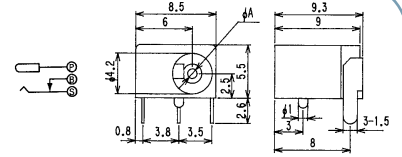
No. MP-121WN

3.4 × 1.4 RIGHT ANGLE DC PLUG
(DC12V 0.5A)



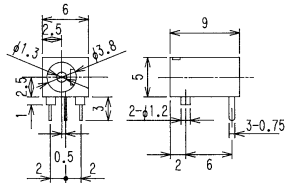
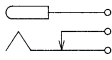
No. MJ-82-1

DC JACK FOR P.C.B.
PLUG TYPE: 3.4 × 1.4
(DC6V 0.5A)



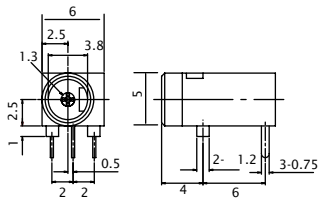
No. MJ-83

DC JACK FOR P.C.B.
PLUG TYPE: 3.4 × 1.4
(DC6V 0.5A)



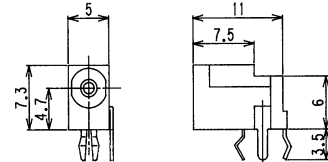
No. MJ-84

DC JACK FOR P.C.B.
PLUG TYPE: 3.4 × 1.4
(DC6V 0.5A)



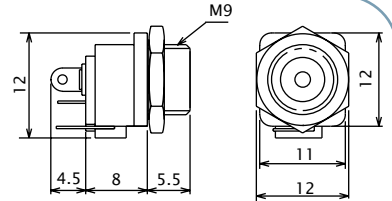
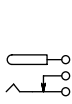
No. MJ-25N1

DC JACK FOR P.C.B.
PLUG TYPE: 3.4 × 1.4
(DC6V 0.5A)



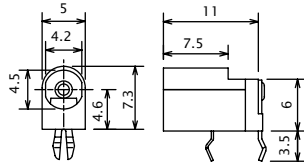
No. MJ-44

PANEL MOUNT DC JACK
PLUG TYPE: 3.4 × 1.4
(DC12V 0.5A)



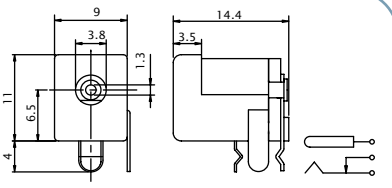
No. MJ-441DJ

DC JACK FOR P.C.B.
PLUG TYPE: 3.4 × 1.4
(DC6V 0.5A)



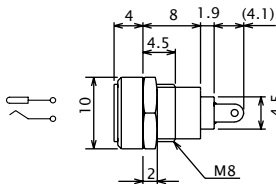
No. MJ-780DJ

DC JACK
PLUG TYPE: 3.4 × 1.4
(DC12V 0.5A)



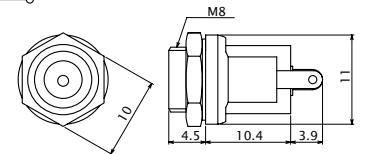
No. MJ-99

PANEL MOUNT DC JACK
PLUG TYPE: 3.4 × 1.4
(DC12V 0.5A)



No. MJ-74

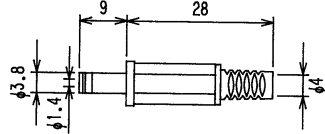
PANEL MOUNT DC JACK
PLUG TYPE: 3.4 × 1.4
(DC12V 0.5A)



PLUG TYPE 3.8 × 1.4

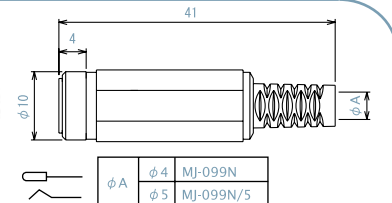
No. MP-138NK

3.8 × 1.4 DC PLUG
(DC12V 0.5A)



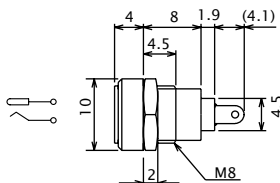
No. MJ-099N

DC INLINE JACK
PLUG TYPE: 3.4 × 1.4
(DC12V 0.5A)



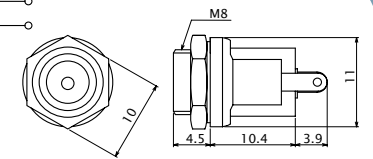
No. MJ-99/3.8

PANEL MOUNT DC JACK
PLUG TYPE: 3.8 × 1.4
(DC12V 0.5A)



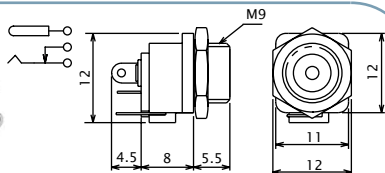
No. MJ-75

PANEL MOUNT DC JACK
PLUG TYPE: 3.8 × 1.4
(DC12V 0.5A)



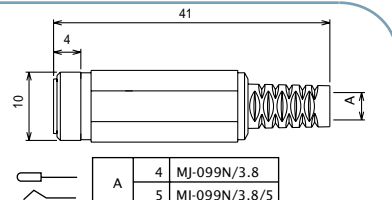
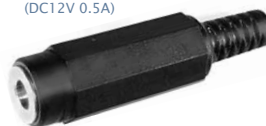
No. MJ-45

PANEL MOUNT DC JACK
PLUG TYPE: 3.8 × 1.4
(DC12V 0.5A)



No. MJ-099N/3.8

DC INLINE JACK
PLUG TYPE: 3.8 × 1.4
(DC12V 0.5A)



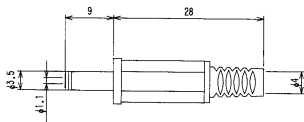


DC PLUGS & JACKS

PLUG TYPE 3.5 × 1.1

No. MP-135NK

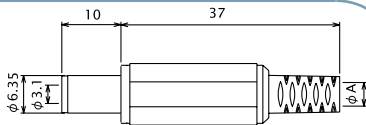
3.5 × 1.1 DC PLUG
(DC12V 0.5A)



PLUG TYPE 6.3 × 3.1

No. MP-065L

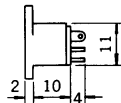
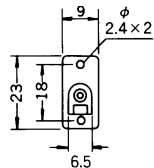
6.3 × 3.1 DC PLUG
(DC12V 2A)



ϕA	$\phi 4$	MJ-065L
	$\phi 5$	MJ-065L/5

No. MJ-065M

PANEL MOUNT DC JACK
PLUG TYPE: 6.3 × 3.1
(DC12V 2A)



Marushin electric mfg. co., ltd