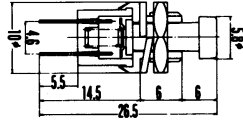




PUSH BUTTON SWITCHES

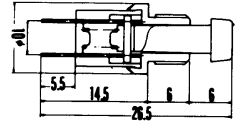
No. MS-312

BABY PUSH BUTTON SWITCH
(PUSH ON TYPE)



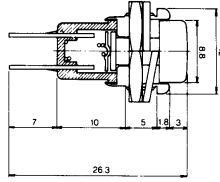
No. MS-313

BABY PUSH BUTTON SWITCH
(PUSH OFF TYPE)



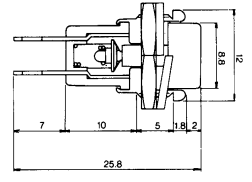
No. MS-350

MINIATURE PUSH BUTTON SWITCH
(PUSH ON TYPE)



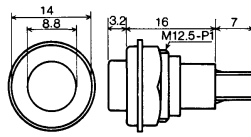
No. MS-351

MINIATURE PUSH BUTTON SWITCH
(PUSH OFF TYPE)



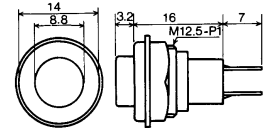
No. MS-350M

MINIATURE PUSH BUTTON SWITCH (PUSH ON TYPE)
ALL PLASTIC HOUSING



No. MS-351M

MINIATURE PUSH BUTTON SWITCH (PUSH OFF TYPE)
ALL PLASTIC HOUSING



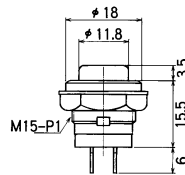
No. MS-356M

PUSH BUTTON SWITCH (PUSH ON TYPE)



Specification

Items	Specification
Circuit arrangement	SPST
Operation mode	OFF-(ON) Momentary
Rating	3A 125V AC
Contact resistance	20m Max
Insulation resistance	100M Min
Withstand voltage	1,000V AC for 1 minute



No. MS-357

PUSH BUTTON SWITCH (PUSH ON TYPE)

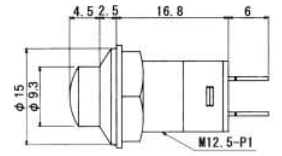


No. MS-358

PUSH BUTTON SWITCH ALTERNATE
(PUSH ON, PUSH OFF TYPE)

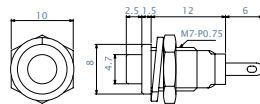
Specification

Items	Specification
Circuit arrangement	SPST
Operation mode	MS-357 OFF-(ON) Momentary MS-358 OFF-ON Alternate
Rating	3A 125V AC
Contact resistance	20m Max
Insulation resistance	100M Min
Withstand voltage	1,000V AC for 1 minute



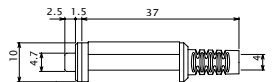
No. MS-300

MINIATURE PUSH BUTTON SWITCH (PUSH ON TYPE)
超小型プッシュスイッチ



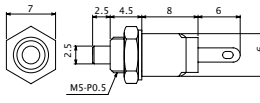
No. MS-400

MINIATURE INLINE PUSH BUTTON SWITCH (PUSH ON TYPE)
超小型手元プッシュスイッチ



No. MS-311

MINIATURE PUSH BUTTON SWITCH (PUSH ON TYPE)
超小型プッシュスイッチ

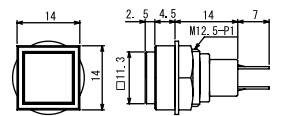


No. MS-370M

PUSH BUTTON SWITCH (PUSH ON TYPE)

No. MS-371M

PUSH BUTTON SWITCH (PUSH OFF TYPE)

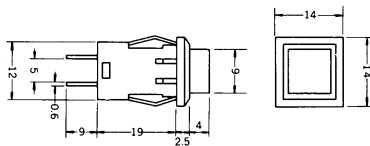


No. MSDK-3C

PUSH SWITCH MOMENTARY TYPE
(PUSH ON TYPE)

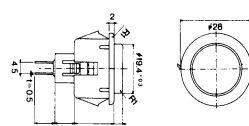
No. MSDK-3A

PUSH SWITCH ALTERNATE TYPE
(PUSH ON, PUSH OFF TYPE)



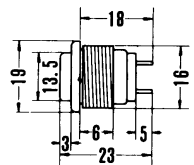
No. MS-24

PUSH BUTTON SWITCH 24mm
(PUSH ON TYPE)
Color : Red, Yellow, Black, White
Blue, Green & Orange
Rating : 30VDC 100mA



No. MS-327

PUSH BUTTON SWITCH (2P)
(PUSH ON TYPE)
Rating : 125 Volts 3 Amp.



No. MS-30

PUSH BUTTON SWITCH 30mm
(PUSH ON TYPE)
Color : Red, Yellow, Black, White
Blue, Green & Orange
Rating : 30VDC 100mA

