

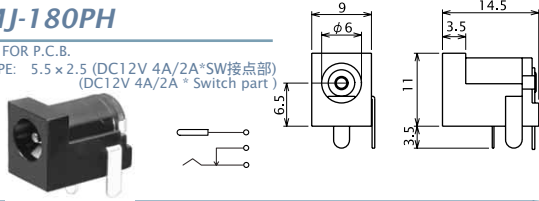
DC PLUGS & JACKS

DCプラグ・ジャック

No. MJ-179PH

DC JACK FOR P.C.B.
PLUG TYPE: 5.5×2.1 (DC12V 4A/2A*SW接点部)
(DC12V 4A/2A* Switch part)

- * 高容量
High-capacity current type
- * UL94V-0材使用
Use of flame retardant material (UL94V-0)



No. MJ-180PH

DC JACK FOR P.C.B.
PLUG TYPE: 5.5×2.5 (DC12V 4A/2A*SW接点部)
(DC12V 4A/2A* Switch part)



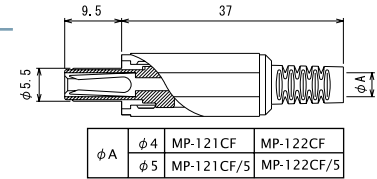
No. MP-121CF

5.5 × 2.1 DC PLUG (DC12V 4A)

- * センターコンタクトをフォーク端子 (音叉形) 形状とし、接触の安定化を図りました。
Two-point contacts assure highly reliable electrical and mechanical connection

No. MP-122CF

5.5 × 2.5 DC PLUG (DC12V 4A)



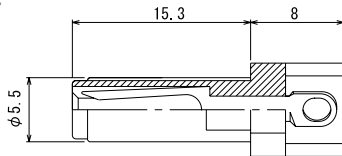
No. MP-121-1

5.5 × 2.1 DC PLUG FOR MOLDING
(DC12V 4A)

- * センターコンタクトをフォーク端子 (音叉形) 形状とし、接触の安定化を図りました。
Two-point contacts assure highly reliable electrical and mechanical connection

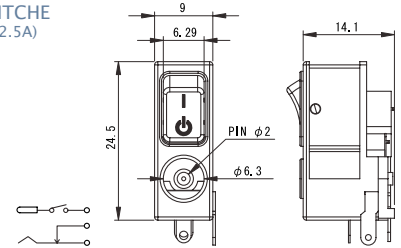
No. MP-122-1

5.5 × 2.5 DC PLUG FOR MOLDING
(DC12V 4A)



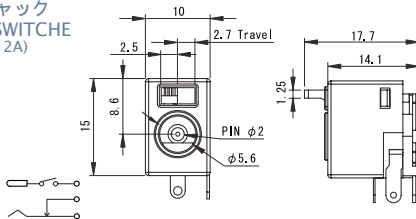
No. MJ-R02

ON-OFFスイッチ付DCジャック
DC POWER JACK WITH SWITCH
PLUG TYPE: 5.5×2.1 (DC12V 2.5A)



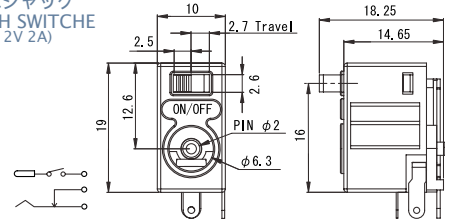
No. MJ-S03

ON-OFFスイッチ付DCジャック
DC POWER JACK WITH SWITCH
PLUG TYPE: 5.5×2.1 (DC12V 2A)



No. MJ-S04

ON-OFFスイッチ付DCジャック
DC POWER JACK WITH SWITCH
PLUG TYPE: 5.5×2.1 (DC12V 2A)



PUSH BUTTON SWITCHES

プッシュスイッチ

No. MS-380

PUSH BUTTON SWITCH (PUSH ON TYPE)

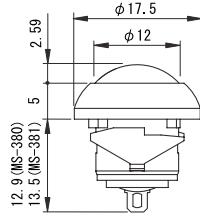
SNAP-IN MOUNT TYPE
スナップインタイプ

No. MS-381

PUSH BUTTON SWITCH (PUSH OFF TYPE)



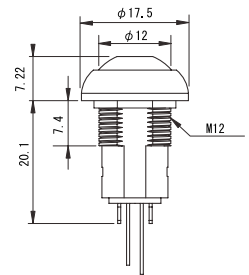
Body Color : Black
Cap Color : Black / Red



No. MS-384L

PUSH BUTTON SWITCH W/LED
(PUSH ON - PUSH OFF : ALTERNATE TYPE)

ILLUMINATED
照光式



Model No	Body Color	Cap Color	LED Color
MS-384L#1	Black	Black	Red
MS-384L#2	Black	Black	Blue
MS-384L#3	Black	Black	Green
MS-384L#1	Black	Red	Red
MS-384L#2	Black	Red	Blue
MS-384L#3	Black	Red	Green

No. MS-382

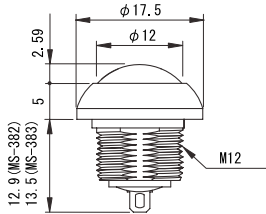
PUSH BUTTON SWITCH (PUSH ON TYPE)

No. MS-383

PUSH BUTTON SWITCH (PUSH OFF TYPE)



Body Color : Black
Cap Color : Black / Red



Specifications

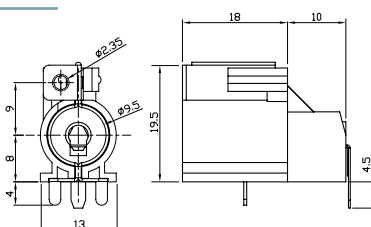
Items	Specification
Rating	MS-380 ~ 383 : 125V AC 125mA / 32V AC 400mA / 50V DC 100mA MS-384L : 125V AC 2A / 24V DC 100mA
Contact resistance	50mΩmax
Insulation resistance	1,000 MΩ at 500V DC
Dielectric strength	1,000 V AC for 1 minute
Panel thickness	MS-380, 381 : t 0.8mm ~ t 1.8mm MS-382 ~ 384L : t 1.5mm ~ t 4.0mm

AUTO ANTENNA CONNECTORS

カーアンテナコネクター

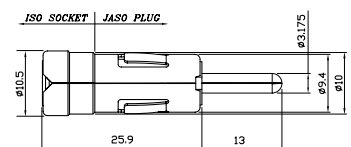
No. MJ-AJ01

AUTO ANTENNA JACK FOR P.C.B.



No. MA-IJ01

ISO - JASO ADAPTER

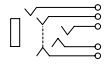
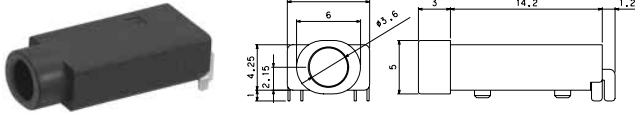


AUDIO PHONE JACKS

単頭ジャック

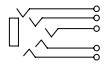
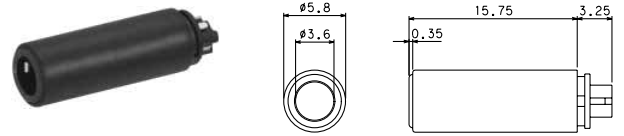
No.M03-A70 (3.5φ-4極 防水型)

4-CONDUCTOR MINIATURE JACK FOR P.C.B
(WATER PROOF)



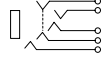
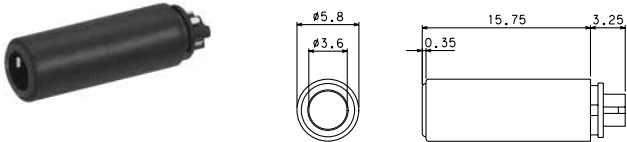
No.M03-A01A0 (3.5φ-5極)

MINIATURE INLINE JACK FOR MOLDING
5-CONDUCTOR



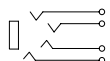
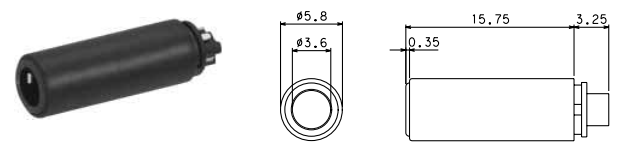
No.M03-A01B0 (3.5φ-4極)

MINIATURE INLINE JACK FOR MOLDING
4-CONDUCTOR



No.M03-A01C0 (3.5φ-4極)

MINIATURE INLINE JACK FOR MOLDING
4-CONDUCTOR



AUDIO CABLES

オーディオケーブル

No.MC-25MN (2.5φ-2極)

SUB-MINIATURE PLUG WITH 1.8M LONG CABLE
2-CONDUCTOR



No.MC-25MNL (2.5φ-2極)

SUB-MINIATURE RIGHT ANGLE PLUG WITH 1.8M LONG CABLE
2-CONDUCTOR



No.MC-25ST (2.5φ-3極)

SUB-MINIATURE PLUG WITH 1.8M LONG CABLE
3-CONDUCTOR



No.MC-25STL (2.5φ-3極)

SUB-MINIATURE RIGHT ANGLE PLUG WITH 1.8M LONG CABLE
3-CONDUCTOR



No.MC-35MN (3.5φ-2極)

MINIATURE PLUG WITH 1.8M LONG CABLE
2-CONDUCTOR



No.MC-35MNL (3.5φ-2極)

MINIATURE RIGHT ANGLE PLUG WITH 1.8M LONG CABLE
2-CONDUCTOR



No.MC-35ST (3.5φ-3極)

MINIATURE PLUG WITH 1.8M LONG CABLE
3-CONDUCTOR



No.MC-35STL (3.5φ-3極)

MINIATURE RIGHT ANGLE PLUG WITH 1.8M LONG CABLE
3-CONDUCTOR



No.MC-4250L (2.5φ-4極)

SUB-MINIATURE RIGHT ANGLE PLUG WITH 1.8M LONG CABLE
4-CONDUCTOR



No.MC-4350L (3.5φ-4極)

MINIATURE RIGHT ANGLE PLUG WITH 1.8M LONG CABLE
4-CONDUCTOR

