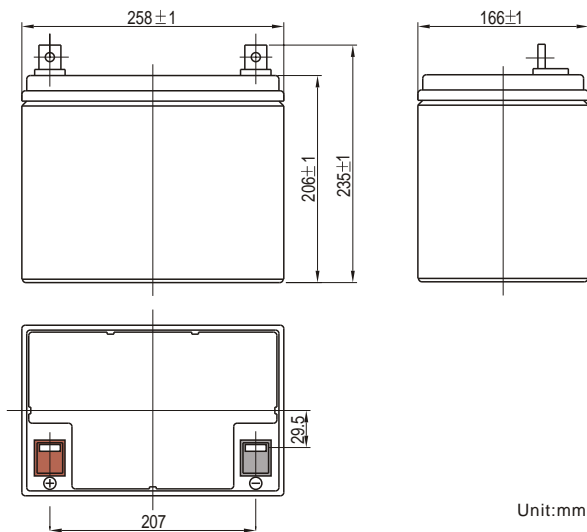




VISION **6FM 75**
12V 75Ah

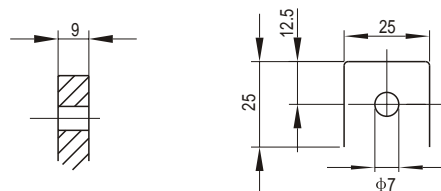
■ **Specifications**

Nominal Voltage		12V
Rated Capacity (20 hour rate)		75Ah
Dimensions	Total Height (with terminals)	9.25 inches (235mm)
	Height	8.11 inches (206mm)
	Length	10.2 inches (258mm)
	Width	6.54 inches (166mm)
Weight		Approx.52.91lbs (24Kg)



Unit:mm

Terminal (F9)



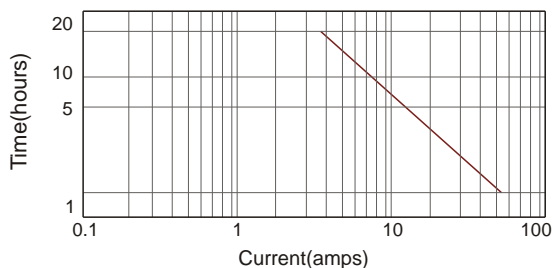
■ Optional Terminal: F11(See Page 9)

Unit:mm

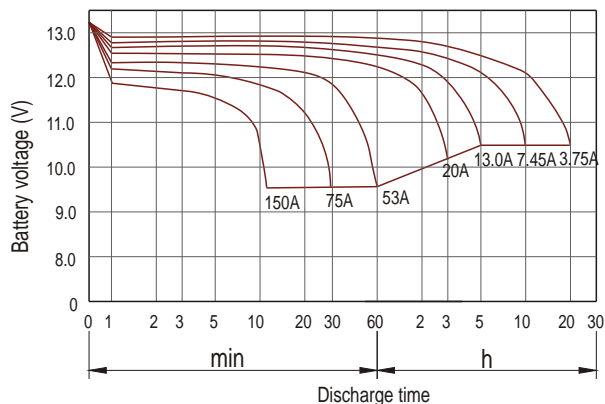
■ **Characteristics**

Capacity* 77°F(25°C)	20 hour rate (3.75A)	75Ah
	10 hour rate (7.45A)	74.5Ah
Capacity affected by Temperature (20 hour rate)	5 hour rate (13A)	65Ah
	1 hour rate (53A)	53Ah
	15 minute Rate (125A)	31.3Ah
Internal Resistance	Full charged Battery 77°F(25°C)	5.7mW
Capacity affected by Temperature (20 hour rate)	104°F(40°C)	102%
	77°F(25°C)	100%
	32°F(0°C)	85%
	5°F(-15°C)	65%
Self-Discharge 68°F(20°C)	Capacity after 3 month storage	90%
	Capacity after 6 month storage	80%
	Capacity after 12 month storage	60%
Max. Discharge Current 77°F(25°C)	700A (5s)	
Terminal	F9	
Charge (Constant Voltage)	Cycle	14.4-14.7V/77°F(25°C) Max. Current 22.5A
	Float	13.6-13.8V/77°F(25°C)

Discharge current v's time 77°F(25°C)



Discharge characteristic (25°C)



Constant power discharge ratings-watts per cell at 25°C(77°F)

End Point Volts/Cell	5min	10min	15min	30min	45min	1h	2h	3h	5h
1.60V	390	295	238	138	105	85.7	50.8	32.1	23.2
1.65V	366	278	225	131	99.9	82.1	49.3	31.3	22.8
1.70V	342	261	212	124	94.9	78.3	47.6	30.4	22.4
1.75V	318	244	199	117	89.8	74.4	45.8	29.5	21.9
1.80V	295	227	186	110	84.6	70.4	43.8	28.5	21.4

*The above data are average values, and can be obtained within 3 charge/discharge cycles. These are not minimum values.