

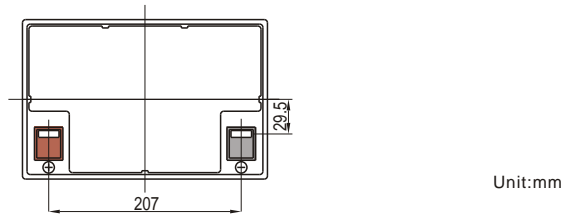
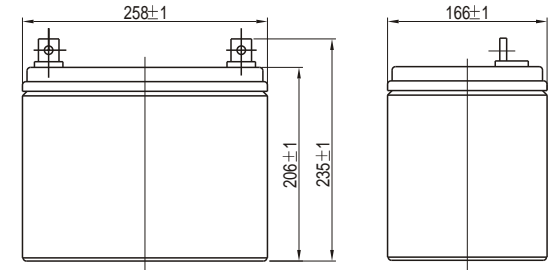



6FM 60

12V 60Ah

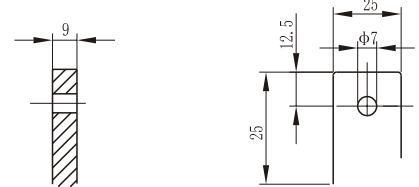
Specifications

Nominal Voltage		12V
Rated Capacity (20 hour rate)		60Ah
Dimensions	Total Height (with terminals)	9.25 inches (235mm)
	Height	8.11 inches (206mm)
	Length	10.2 inches (258mm)
	Width	6.54 inches (166mm)
Weight		Approx.52.91lbs (24Kg)



Unit:mm

Terminal (F9)



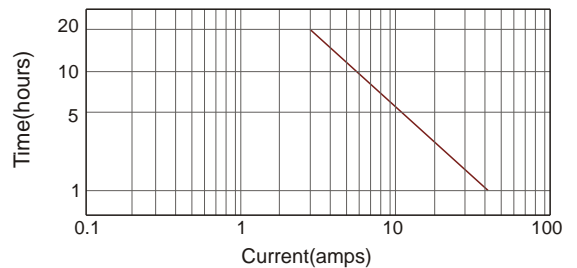
■ Optional Terminal: F11(See Page 9)

Unit:mm

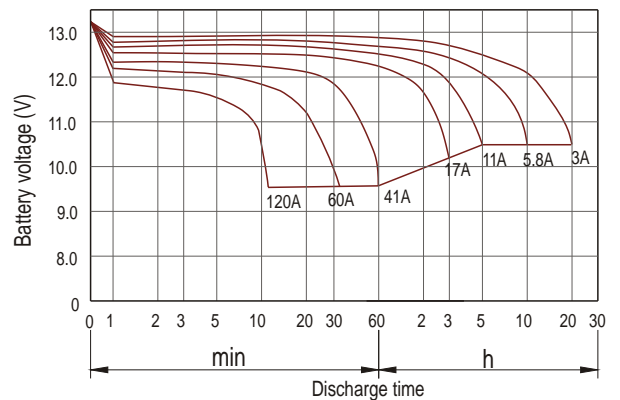
Characteristics

Capacity* 77°F(25°C)	20 hour rate (3A)	60Ah
	10 hour rate (5.8A)	58Ah
Capacity affected by Temperature (20 hour rate)	5 hour rate (11A)	55Ah
	1 hour rate (41A)	41Ah
	15 minute Rate (110A)	27.5Ah
Internal Resistance	Full charged Battery 77°F(25°C)	5.5mW
Capacity affected by Temperature (20 hour rate)	104°F(40°C)	102%
	77°F(25°C)	100%
	32°F(0°C)	85%
Self-Discharge 68°F(20°C)	5°F(-15°C)	65%
	Capacity after 3 month storage	90%
	Capacity after 6 month storage	80%
Max. Discharge Current 77°F(25°C)	Capacity after 12 month storage	60%
	600A (5s)	
Terminal	F9	
Charge (Constant Voltage)	Cycle	14.4-14.7V/77°F(25°C) Max. Current 18A
	Float	13.6-13.8V/77°F(25°C)

Discharge current v's time 77°F(25°C)



Discharge characteristic (25°C)



Constant power discharge ratings-watts per cell at 25°C(77°F)

End Point Volts/Cell	5min	10min	15min	30min	45min	1h	2h	3h	5h
1.60V	367	250	192	123	97.8	77.5	46.8	30.0	20.0
1.65V	344	236	181	117	93.3	74.2	45.4	29.2	19.7
1.70V	321	221	171	111	88.7	70.8	43.8	28.4	19.3
1.75V	299	206	160	104	83.9	67.3	42.1	27.6	18.9
1.80V	277	192	150	97.9	79.0	63.7	40.3	26.6	18.4

*The above data are average values, and can be obtained within 3 charge/discharge cycles. These are not minimum values.