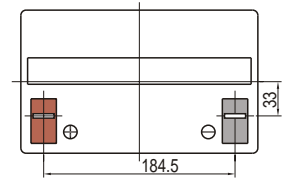
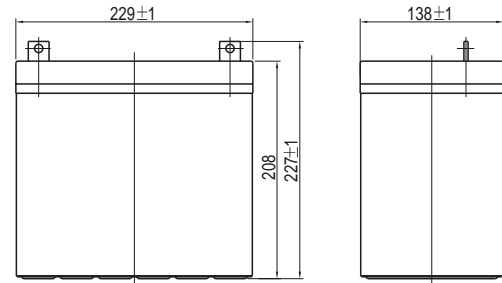




6FM 55SG 12V 55Ah

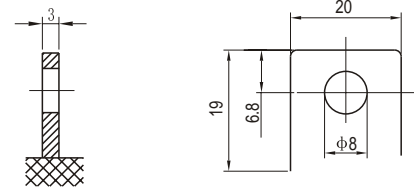
■ Specifications

Nominal Voltage		12V
Rated Capacity (20 hour rate)		55Ah
Dimensions	Total Height (with terminals)	8.94 inches (227mm)
	Height	8.19 inches (208mm)
	Length	9.02 inches (229mm)
	Width	5.43 inches (138mm)
Weight		Approx.43.01lbs (19.5Kg)



Unit:mm

Terminal (F5)



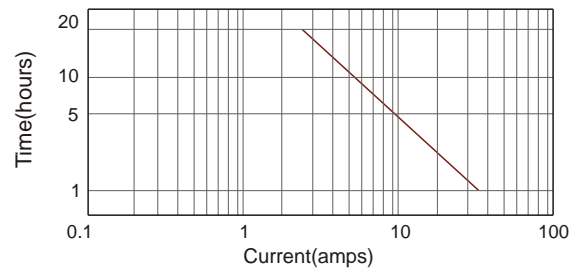
■ Optional Terminal: F11(See Page 9)

Unit:mm

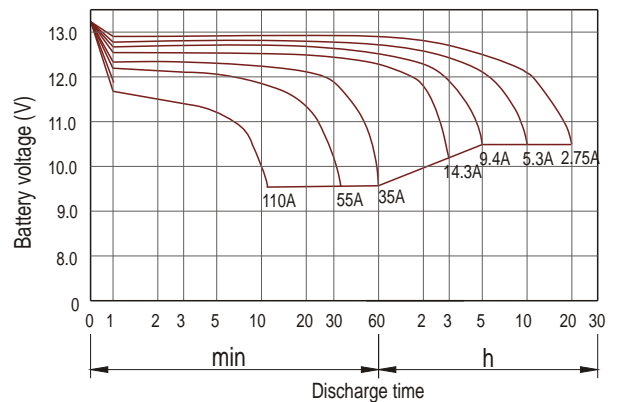
■ Characteristics

Capacity* 77°F(25°C)	20 hour rate (2.75A)	55Ah
	10 hour rate (5.3A)	53Ah
	5 hour rate (9.4A)	47Ah
	1 hour rate (35A)	35Ah
	15 minute Rate (100A)	25.0Ah
Internal Resistance	Full charged Battery 77°F(25°C)	5.8mW
Capacity affected by Temperature (20 hour rate)	104°F(40°C)	102%
	77°F(25°C)	100%
	32°F(0°C)	85%
	5°F(-15°C)	65%
Self-Discharge 68°F(20°C)	Capacity after 3 month storage	90%
	Capacity after 6 month storage	80%
	Capacity after 12 month storage	60%
Max. Discharge Current 77°F(25°C)	550A (5s)	
Terminal		F5
Charge (Constant Voltage)	Cycle	14.4-14.7V/77°F(25°C) Max. Current 16.5A
	Float	13.6-13.8V/77°F(25°C)

Discharge current v's time 77°F(25°C)



Discharge characteristic (25°C)



Constant power discharge ratings-watts per cell at 25°C(77°F)

End Point Volts/Cell	5min	10min	15min	30min	45min	1h	2h	3h	5h
1.60V	347	249	195	121	88.6	72.1	40.9	29.1	18.6
1.65V	330	245	191	114	87.6	70.2	40.5	28.8	18.6
1.70V	321	237	186	109	86.2	68.8	40.0	28.5	18.4
1.75V	296	226	180	105	83.8	67.3	39.3	28.1	18.0
1.80V	264	210	174	100	82.6	66.3	38.4	27.5	17.5

*The above data are average values, and can be obtained within 3 charge/discharge cycles. These are not minimum values.