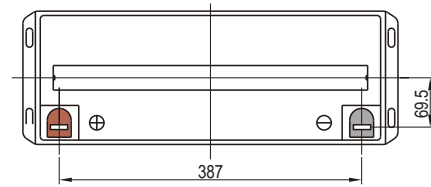
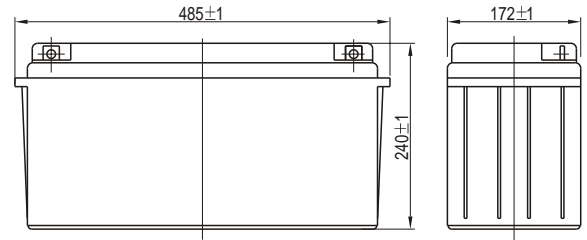




# VISION 6FM 150H 12V 150Ah

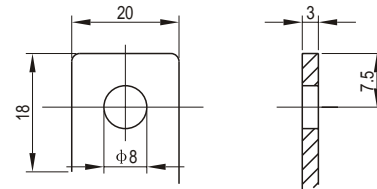
## Specifications

Nominal Voltage		12V
Rated Capacity (20 hour rate)		150Ah
Dimensions	Total Height (with terminals)	9.45 inches (240mm)
	Height	9.45 inches (240mm)
	Length	19.1 inches (485mm)
	Width	6.77 inches (172mm)
Weight		Approx.103.61lbs (47Kg)



Unit:mm

### Terminal (F5)

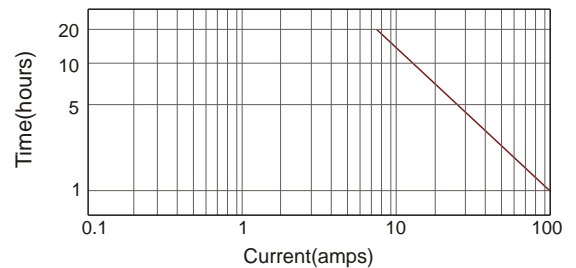


Unit:mm

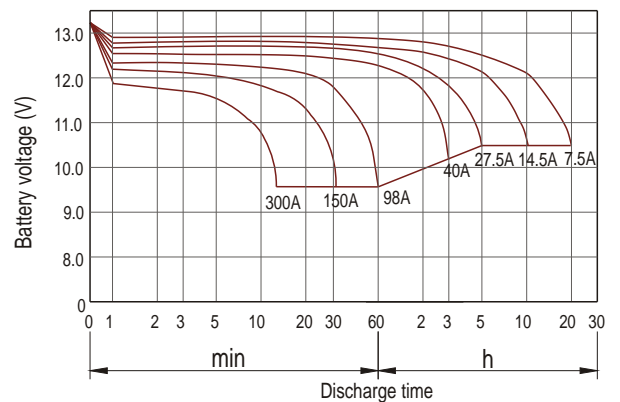
## Characteristics

Capacity* 77°F(25°C)	20 hour rate (7.5A)	150Ah
	10 hour rate (14.5A)	145Ah
	5 hour rate (27.5A)	137.5Ah
	1 hour rate (98A)	98Ah
	15 minute Rate (228A)	57.0Ah
Internal Resistance	Full charged Battery 77°F(25°C)	1.9mW
Capacity affected by Temperature (20 hour rate)	104°F(40°C)	102%
	77°F(25°C)	100%
	32°F(0°C)	85%
	5°F(-15°C)	65%
Self-Discharge 68°F(20°C)	Capacity after 3 month storage	90%
	Capacity after 6 month storage	80%
	Capacity after 12 month storage	60%
Max. Discharge Current 77°F(25°C)	1000A (5s)	
Terminal		F5
Charge (Constant Voltage)	Cycle	14.4-14.7V/77°F(25°C) Max. Current 45A
	Float	13.6-13.8V/77°F(25°C)

### Discharge current v's time 77°F(25°C)



### Discharge characteristic (25°C)



### Constant power discharge ratings-watts per cell at 25°C(77°F)

End Point Volts/Cell	5min	10min	15min	30min	45min	1h	2h	3h	5h
1.60V	783	609	426	300	214	169	114	77.9	55.7
1.65V	734	574	403	285	204	162	110	76.0	54.7
1.70V	686	538	379	270	194	154	107	73.9	53.7
1.75V	638	503	356	254	183	147	103	71.7	52.5
1.80V	591	468	332	238	173	139	98.1	69.2	51.2

\*The above data are average values, and can be obtained within 3 charge/discharge cycles. These are not minimum values.