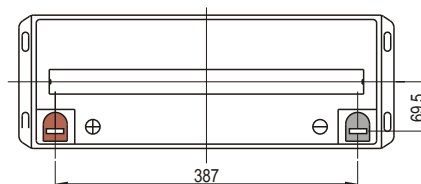
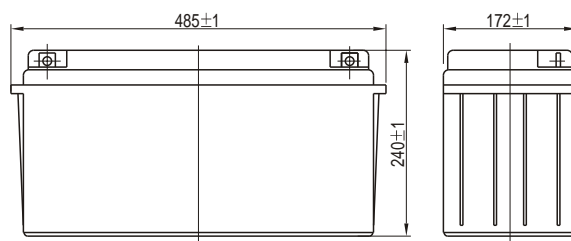


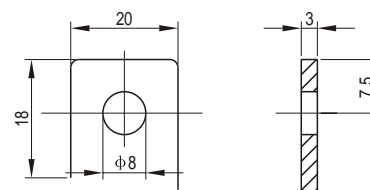


VISION 6FM 150 12V 150Ah



Unit:mm

Terminal (F5)



■ Optional Terminal: F12(See Page9)

Unit:mm

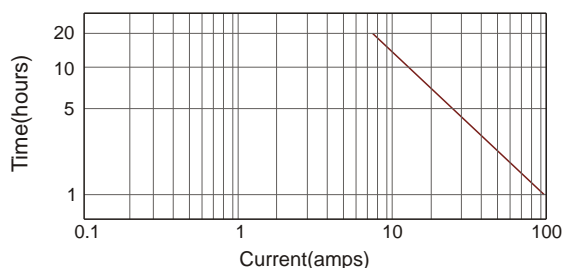
Specifications

Nominal Voltage		12V
Rated Capacity (20 hour rate)		150Ah
Dimensions	Total Height (with terminals)	9.45 inches (240mm)
	Height	9.45 inches (240mm)
	Length	19.1 inches (485mm)
	Width	6.77 inches (172mm)
Weight		Approx.1041lbs (47Kg)

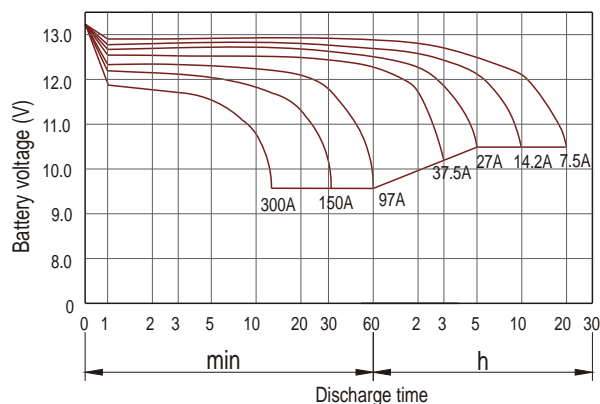
Characteristics

Capacity* 77°F(25°C)	20 hour rate (7.5A)	150Ah
	10 hour rate (14.2A)	142Ah
Capacity affected by Temperature (20 hour rate)	5 hour rate (27A)	135Ah
	1 hour rate (97A)	97Ah
	15 minute Rate (290A)	72.5Ah
Internal Resistance	Full charged Battery 77°F(25°C)	4mW
Capacity affected by Temperature (20 hour rate)	104°F(40°C)	102%
	77°F(25°C)	100%
	32°F(0°C)	85%
	5°F(-15°C)	65%
Self-Discharge 68°F(20°C)	Capacity after 3 month storage	90%
	Capacity after 6 month storage	80%
	Capacity after 12 month storage	60%
Max. Discharge Current 77°F(25°C)	1000A (5s)	
Terminal	F5	
Charge (Constant Voltage)	Cycle	14.4-14.7V/77°F(25°C) Max. Current 45A
	Float	13.6-13.8V/77°F(25°C)

Discharge current v's time 77°F(25°C)



Discharge characteristic (25°C)



Constant power discharge ratings-watts per cell at 25°C(77°F)

End Point Volts/Cell	5min	10min	15min	30min	45min	1h	2h	3h	5h
1.60V	817	617	500	297	213	167	116	79.7	58.4
1.65V	766	581	473	282	204	160	112	77.7	57.3
1.70V	715	545	446	267	193	152	108	75.6	56.2
1.75V	665	509	418	251	183	145	104	73.3	55.0
1.80V	616	473	390	236	172	137	99.6	70.8	53.7

*The above data are average values, and can be obtained within 3 charge/discharge cycles. These are not minimum values.