



# VISION 6FM 120H 12V 120Ah

## Specifications

Nominal Voltage		12V
Rated Capacity (20 hour rate)		120Ah
Dimensions	Total Height (with terminals)	8.94 inches (227mm)
	Height	8.94 inches (227mm)
	Length	16.1 inches (410mm)
	Width	6.93 inches (176mm)
Weight		Approx.83.81lbs (38Kg)

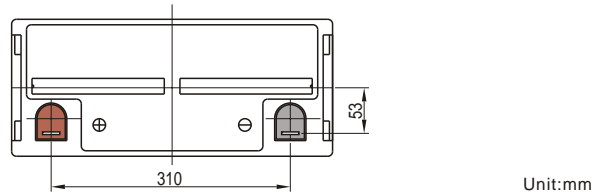
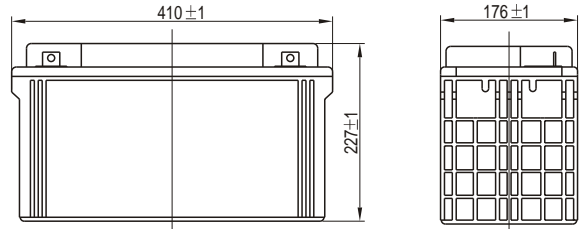
## Characteristics

Capacity* 77°F(25°C)	20 hour rate (6A)	120Ah
	10 hour rate (11.4A)	114Ah
Internal Resistance	5 hour rate (20A)	100Ah
	1 hour rate (80A)	80Ah
Capacity affected by Temperature (20 hour rate)	15 minute Rate (210A)	52.5Ah
	Full charged Battery 77°F(25°C)	2mW
	104°F(40°C)	102%
	77°F(25°C)	100%
Self-Discharge 68°F(20°C)	32°F(0°C)	85%
	5°F(-15°C)	65%
	Capacity after 3 month storage	90%
Max. Discharge Current 77°F(25°C)	Capacity after 6 month storage	80%
	Capacity after 12 month storage	60%
Terminal		F5
Charge (Constant Voltage)	Cycle	14.4-14.7V/77°F(25°C) Max. Current 36A
	Float	13.6-13.8V/77°F(25°C)

## Constant power discharge ratings-watts per cell at 25°C(77°F)

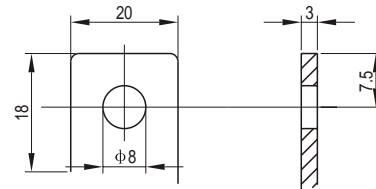
End Point Volts/Cell	5min	10min	15min	30min	45min	1h	2h	3h	5h
1.60V	617	477	348	228	182	148	93.4	65.2	46.0
1.65V	578	449	330	217	173	142	90.6	63.6	45.2
1.70V	540	421	310	205	165	136	87.5	61.9	44.3
1.75V	502	393	291	193	156	129	84.1	60.0	43.3
1.80V	465	366	272	181	147	122	80.5	58.0	42.3

\*The above data are average values, and can be obtained within 3 charge/discharge cycles. These are not minimum values.



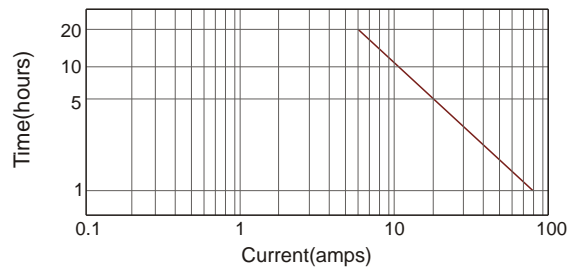
Unit:mm

## Terminal (F5)



Unit:mm

## Discharge current v's time 77°F(25°C)



## Discharge characteristic (25°C)

