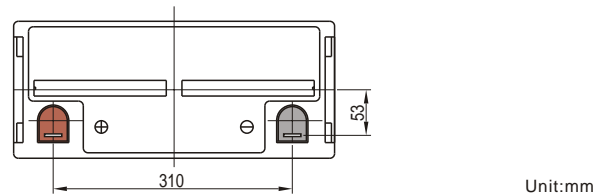
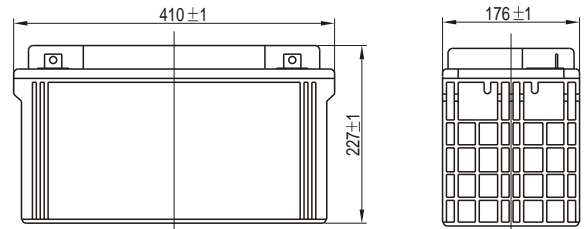




6FM 120
12V 120Ah

Specifications

Nominal Voltage		12V
Rated Capacity (20 hour rate)		120Ah
Dimensions	Total Height (with terminals)	8.94 inches (227mm)
	Height	8.94 inches (227mm)
	Length	16.1 inches (410mm)
	Width	6.93 inches (176mm)
Weight		Approx.83.81lbs (38Kg)

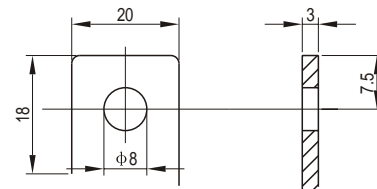


Unit:mm

Characteristics

Capacity* 77°F(25°C)	20 hour rate (6A)	120Ah
	10 hour rate (10.2A)	102Ah
	5 hour rate (18A)	90Ah
	1 hour rate (69A)	69Ah
	15 minute Rate (205A)	51.3Ah
Internal Resistance	Full charged Battery 77°F(25°C)	4.5mW
Capacity affected by Temperature (20 hour rate)	104°F(40°C)	102%
	77°F(25°C)	100%
	32°F(0°C)	85%
Self-Discharge 68°F(20°C)	Capacity after 3 month storage	90%
	Capacity after 6 month storage	80%
	Capacity after 12 month storage	60%
Max. Discharge Current 77°F(25°C)	950A (5s)	
Terminal	F5	
Charge (Constant Voltage)	Cycle	14.4-14.7V/77°F(25°C) Max. Current 36A
	Float	13.6-13.8V/77°F(25°C)

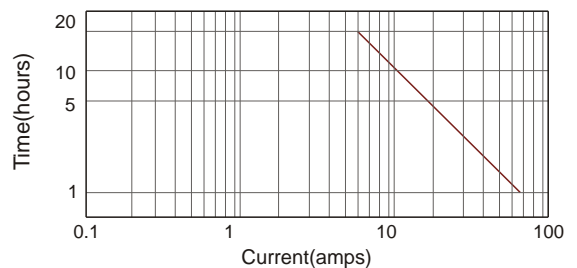
Terminal (F5)



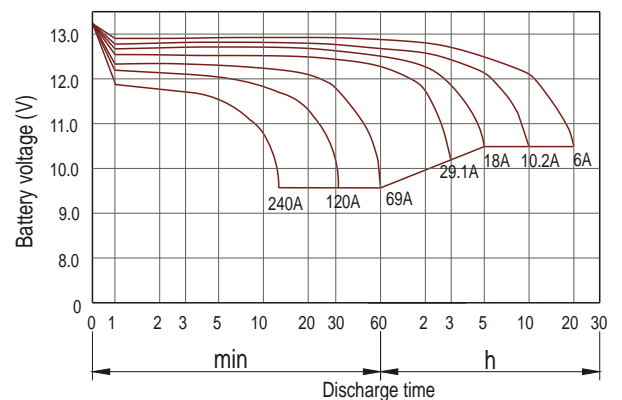
■ Optional Terminal: F12(See Page 9)

Unit:mm

Discharge current v's time 77°F(25°C)



Discharge characteristic (25°C)



Constant power discharge ratings-watts per cell at 25°C(77°F)

End Point Volts/Cell	5min	10min	15min	30min	45min	1h	2h	3h	5h
1.60V	600	476	352	239	160	126	87.5	58.0	37.2
1.65V	563	448	333	227	153	121	84.9	56.6	36.6
1.70V	526	421	314	215	145	115	82.0	55.1	35.9
1.75V	489	393	294	203	137	109	78.8	53.4	35.1
1.80V	453	365	275	190	129	103	75.4	51.6	34.2

*The above data are average values, and can be obtained within 3 charge/discharge cycles. These are not minimum values.