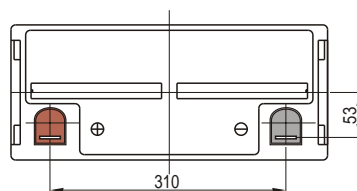
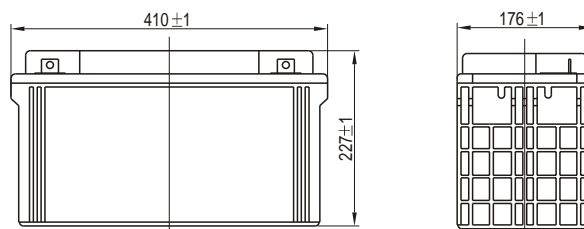




VISION 6FM 100SH 12V 100Ah



Unit:mm

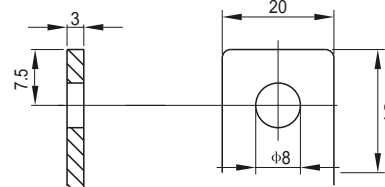
Specifications

Nominal Voltage		12V
Rated Capacity (20 hour rate)		100Ah
Dimensions	Total Height (with terminals)	8.94 inches (227mm)
	Height	8.94 inches (227mm)
	Length	16.1 inches (410mm)
	Width	6.93 inches (176mm)
Weight		Approx.72.81lbs (33Kg)

Characteristics

Capacity* 77°F(25°C)	20 hour rate (5A)	100Ah
	10 hour rate (9.85A)	98.5Ah
	5 hour rate (18.1A)	90.5Ah
	1 hour rate (65.9A)	65.9Ah
	15 minute Rate (194A)	48.5Ah
Internal Resistance	Full charged Battery 77°F(25°C)	4.3mW
Capacity affected by Temperature (20 hour rate)	104°F(40°C)	102%
	77°F(25°C)	100%
	32°F(0°C)	85%
	5°F(-15°C)	65%
Self-Discharge 68°F(20°C)	Capacity after 3 month storage	90%
	Capacity after 6 month storage	80%
	Capacity after 12 month storage	60%
Max. Discharge Current 77°F(25°C)	900A (5s)	
Terminal		F5
Charge (Constant Voltage)	Cycle	14.4-14.7V/77°F(25°C) Max. Current 30A
	Float	13.6-13.8V/77°F(25°C)

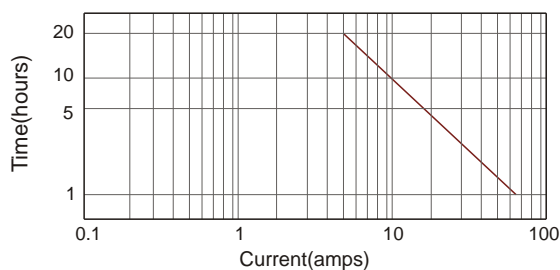
Terminal (F5)



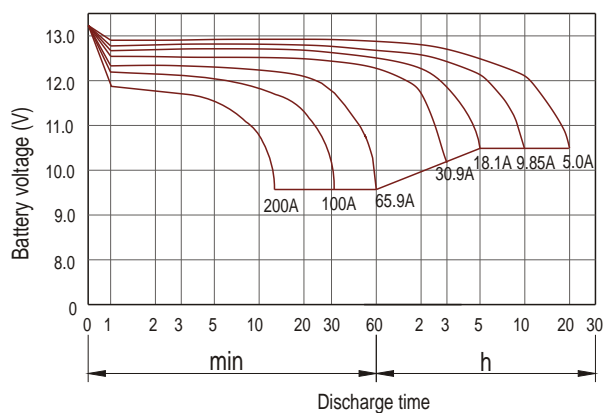
■ Optional Terminal: F12(See Page 9)

Unit:mm

Discharge current v's time 77°F(25°C)



Discharge characteristic (25°C)



Constant power discharge ratings-watts per cell at 25°C(77°F)

End Point Volts/Cell	5min	10min	15min	30min	45min	1h	2h	3h	5h
1.60V	595	431	328	195	148	126	92.5	64.8	39.0
1.65V	558	406	310	185	141	121	89.7	63.3	38.3
1.70V	521	381	292	175	134	115	86.7	61.5	37.6
1.75V	485	356	274	165	127	109	83.3	59.7	36.8
1.80V	449	331	256	155	120	103	79.7	57.6	35.9

*The above data are average values, and can be obtained within 3 charge/discharge cycles. These are not minimum values.