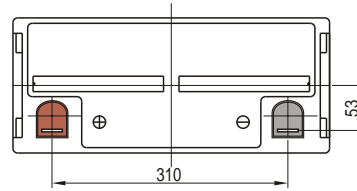
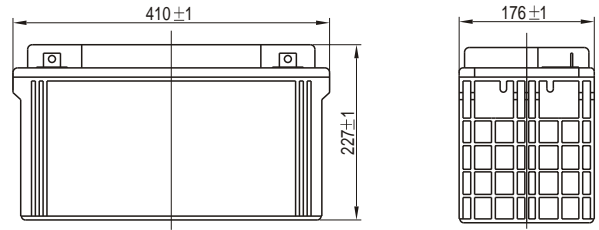




# VISION **6FM 100S** **12V 100Ah**



Unit:mm

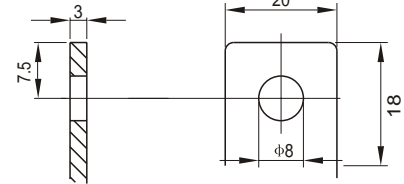
## ■ Specifications

|                               |                               |                        |
|-------------------------------|-------------------------------|------------------------|
| Nominal Voltage               |                               | 12V                    |
| Rated Capacity (20 hour rate) |                               | 100Ah                  |
| Dimensions                    | Total Height (with terminals) | 8.94 inches (227mm)    |
|                               | Height                        | 8.94 inches (227mm)    |
|                               | Length                        | 16.1 inches (410mm)    |
|                               | Width                         | 6.93 inches (176mm)    |
| Weight                        |                               | Approx.72.81lbs (33Kg) |

## ■ Characteristics

|   |                                    |   |
|---|------------------------------------|---|
| Capacity*<br>77°F(25°C)                         | 20 hour rate (5A)                  | 100Ah                                     |
|   | 10 hour rate (9.6A)                | 96Ah                                      |
| Capacity affected by Temperature (20 hour rate) | 5 hour rate (16.5A)                | 82.5Ah                                    |
|   | 1 hour rate (61.8A)                | 61.8Ah                                    |
|   | 15 minute Rate (175A)              | 43.8Ah                                    |
| Internal Resistance                             | Full charged Battery<br>77°F(25°C) | 4.7mW                                     |
| Capacity affected by Temperature (20 hour rate) | 104°F(40°C)                        | 102%                                      |
|   | 77°F(25°C)                         | 100%                                      |
|   | 32°F(0°C)                          | 85%                                       |
|   | 5°F(-15°C)                         | 65%                                       |
| Self-Discharge<br>68°F(20°C)                    | Capacity after 3 month storage     | 90%                                       |
|   | Capacity after 6 month storage     | 80%                                       |
|   | Capacity after 12 month storage    | 60%                                       |
| Max. Discharge Current 77°F(25°C)               | 900A (5s)                          |   |
| Terminal  | F5                                 |   |
| Charge (Constant Voltage)                       | Cycle                              | 14.4-14.7V/77°F(25°C)<br>Max. Current 30A |
|   | Float                              | 13.6-13.8V/77°F(25°C)                     |

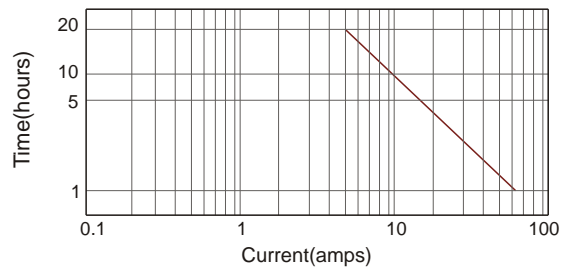
### Terminal (F5)



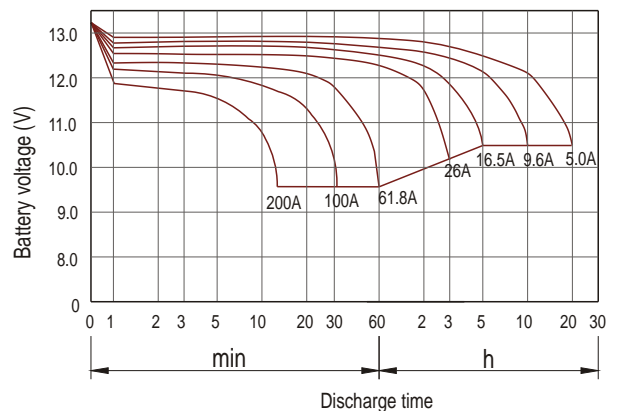
■ Optional Terminal: F12(See Page 9)

Unit:mm

### Discharge current v's time 77°F(25°C)



### Discharge characteristic (25°C)



### Constant power discharge ratings-watts per cell at 25°C(77°F)

| End Point Volts/Cell | 5min | 10min | 15min | 30min | 45min | 1h  | 2h   | 3h   | 5h   |
|----------------------|------|-------|-------|-------|-------|-----|------|------|------|
| 1.60V                | 577  | 398   | 310   | 198   | 149   | 120 | 70.7 | 49.6 | 32.7 |
| 1.65V                | 547  | 393   | 307   | 194   | 147   | 116 | 69.8 | 49.6 | 32.7 |
| 1.70V                | 511  | 383   | 302   | 189   | 143   | 113 | 69.8 | 49.6 | 32.7 |
| 1.75V                | 476  | 358   | 284   | 164   | 142   | 112 | 68.6 | 48.9 | 32.3 |
| 1.80V                | 427  | 333   | 267   | 156   | 139   | 110 | 67.3 | 48.2 | 31.8 |

\*The above data are average values, and can be obtained within 3 charge/discharge cycles. These are not minimum values.