



# VISION 6FM 100R 12V 100Ah

## Specifications

Nominal Voltage		12V
Rated Capacity (20 hour rate)		100Ah
Dimensions	Total Height (with terminals)	8.98 inches (228mm)
	Height	8.66 inches (220mm)
	Length	13.3 inches (337mm)
	Width	6.77 inches (172mm)
Weight		Approx.72.81lbs (33Kg)

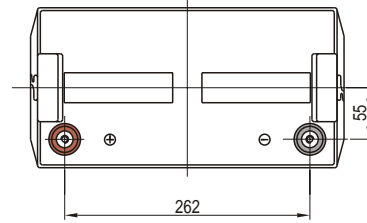
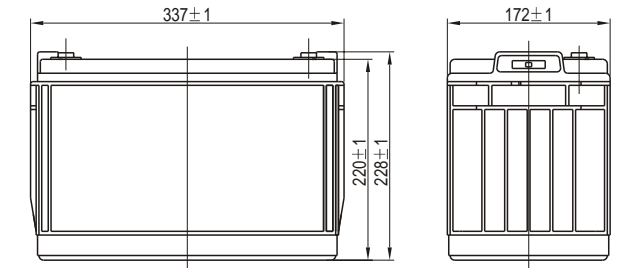
## Characteristics

Capacity* 77°F(25°C)	20 hour rate (5A)	100Ah
	10 hour rate (9.6A)	96Ah
	5 hour rate (16.5A)	82.5Ah
	1 hour rate (61.8A)	61.8Ah
	15 minute Rate (175A)	43.8Ah
Internal Resistance	Full charged Battery 77°F(25°C)	5mW
Capacity affected by Temperature (20 hour rate)	104°F(40°C)	102%
	77°F(25°C)	100%
	32°F(0°C)	85%
	5°F(-15°C)	65%
Self-Discharge 68°F(20°C)	Capacity after 3 month storage	90%
	Capacity after 6 month storage	80%
	Capacity after 12 month storage	60%
Max. Discharge Current 77°F(25°C)	900A (5s)	
Terminal	F14	
Charge (Constant Voltage)	Cycle	14.4-14.7V/77°F(25°C) Max. Current 30A
	Float	13.6-13.8V/77°F(25°C)

## Constant power discharge ratings-watts per cell at 25°C(77°F)

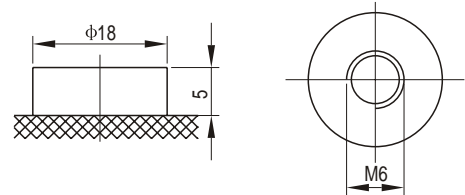
End Point Volts/Cell	5min	10min	15min	30min	45min	1h	2h	3h	5h
1.60V	577	398	310	198	149	120	70.7	49.6	32.7
1.65V	547	393	307	194	147	116	69.8	49.6	32.7
1.70V	511	383	302	189	143	113	69.8	49.6	32.7
1.75V	476	358	284	164	142	112	68.6	48.9	32.3
1.80V	427	333	267	156	139	110	67.3	48.2	31.8

\*The above data are average values, and can be obtained within 3 charge/discharge cycles. These are not minimum values.



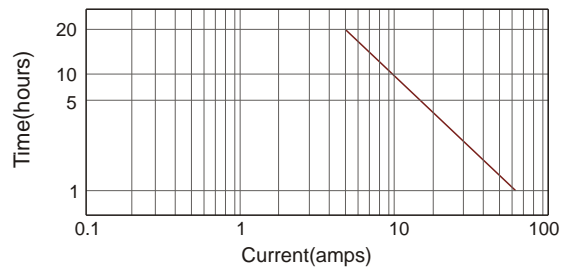
Unit:mm

## Terminal (F14)



Unit:mm

## Discharge current v's time 77°F(25°C)



## Discharge characteristic (25°C)

