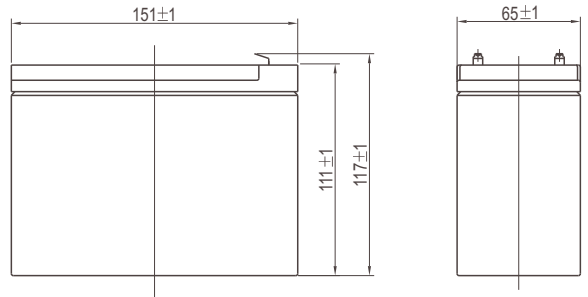




VISION

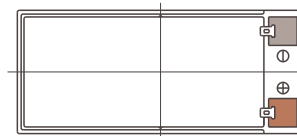
CP12120

12V12Ah



Specifications

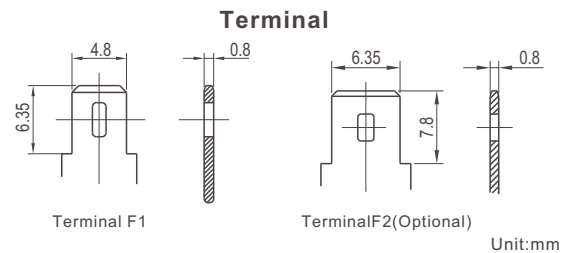
Nominal Voltage		12V
Rated Capacity (20 hour rate)		12Ah
Dimensions	Total Height (with terminals)	3.98 inches (101mm)
	Height	3.74 inches (95mm)
	Length	5.94 inches (151mm)
	Width	3.86 inches (98mm)
Weight		Approx.9.261lbs (4.2Kg)



Unit:mm

Characteristics

Capacity* 77°F(25°C)	20 hour rate (0.6A)	12Ah
	10 hour rate (1.15A)	11.5Ah
	5 hour rate (2.04A)	10.2Ah
	1 hour rate (7.8A)	7.8Ah
	15 minute Rate (26A)	6.50Ah
Internal Resistance	Full charged Battery 77°F(25°C)	16mΩ
Capacity affected by Temperature (20 hour rate)	104°F(40°C)	102%
	77°F(25°C)	100%
	32°F(0°C)	85%
	5°F(-15°C)	65%
Self-Discharge 68°F(20°C)	Capacity after 3 month storage	90%
	Capacity after 6 month storage	80%
	Capacity after 12 month storage	60%
Max. Discharge Current 77°F(25°C)	180A (5s)	
Terminal		F3
Charge (Constant Voltage)	Cycle	14.5-14.9V/77°F(25°C) Max. Current 4.8A
	Float	13.6-13.8V/77°F(25°C)



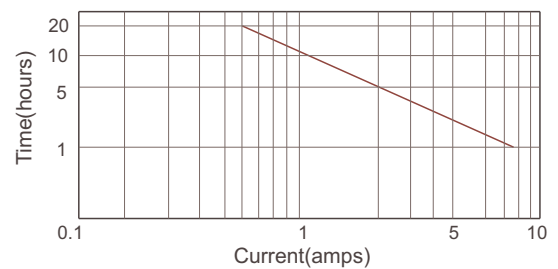
Unit:mm

Constant power discharge ratings-watts per cell at 25°C(77°F)

End Point Volts/Cell	5min	10min	15min	30min	45min	1h	2h	3h	5h
1.60V	88.0	59.2	47.7	28.2	21.0	15.6	9.78	6.52	4.24
1.65V	82.5	55.7	45.1	26.8	20.0	14.9	9.49	6.36	4.17
1.70V	77.1	52.3	42.5	25.3	19.0	14.2	9.17	6.19	4.09
1.75V	71.7	48.8	39.8	23.9	18.0	13.5	8.81	6.00	4.00
1.80V	66.4	45.4	37.2	22.4	17.0	12.8	8.43	5.80	3.90

*The above data are average values, and can be obtained within 3 charge/discharge cycles. These are not minimum values.

Discharge current v's time 77°F(25°C)



Discharge characteristic (25°C)

