



CL 2000

2V 2000Ah



Specifications

Nominal Voltage		2V
Rated Capacity (10 hour rate)		2000Ah
Dimensions	Total Height (with terminals)	15.0 inches (382mm)
	Height	13.6 inches (345mm)
	Length	19.3 inches (490mm)
	Width	13.8 inches (350mm)
Weight		Approx.2911lbs (132Kg)

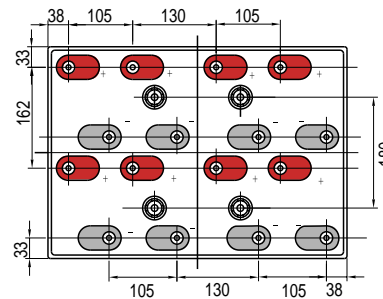
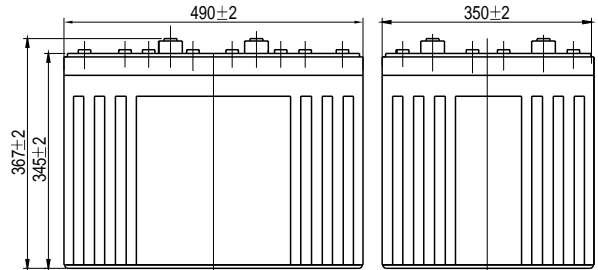
Characteristics

Capacity* 77°F(25°C)	10 hour rate (200A)	2000Ah
	5 hour rate (347A)	1735Ah
	1 hour rate (1295A)	1295Ah
	15 minute Rate (2734A)	684Ah
Internal Resistance	Full charged Battery 77°F(25°C)	0.5mW
Capacity affected by Temperature (20 hour rate)	104°F(40°C)	102%
	77°F(25°C)	100%
	32°F(0°C)	85%
	5°F(-15°C)	65%
Self-Discharge 68°F(20°C)	Capacity after 3 month storage	90%
	Capacity after 6 month storage	80%
	Capacity after 12 month storage	60%
Max. Discharge Current 77°F(25°C)	4000A (5s)	
Terminal	F10	
Charge (Constant Voltage)	Cycle	2.35-2.45V/77°F(25°C) Max. Current 400A
	Float	2.25-2.3V/77°F(25°C)

Constant power discharge ratings-watts per cell at 25°C(77°F)

End Point Volts/Cell	10min	15min	30min	45min	1h	2h	3h	5h
1.60V	4971	3476	2726	2118	1990	1450	1026	645
1.65V	4682	3288	2590	2020	1790	1407	1000	633
1.70V	4392	3098	2450	1919	1681	1359	971	621
1.75V	4102	2906	2308	1816	1586	1306	930	608
1.80V	3815	2714	2165	1710	1497	1250	895	577

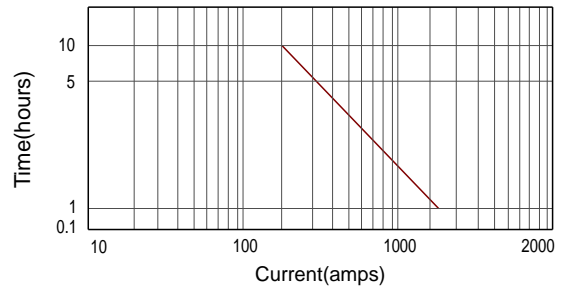
*The above data are average values, and can be obtained within 3 charge/discharge cycles. These are not minimum values.



Total height with removeable cover: 382

Unit:mm

Discharge current v's time 77°F(25°C)



Discharge characteristic (25°C)

