

EIAJ RC5320A TYPE3

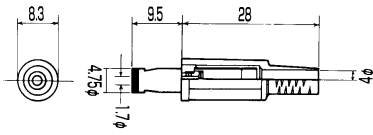
電圧区分3

適合品

RATING 定 格 : DC10.5V 2A

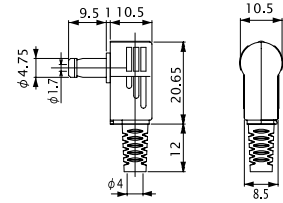
### No.MP-203

4.75 × 1.7 DC PLUG  
EIAJ RC5320A TYPE3 電圧区分3  
(DC 6.3V ~ 10.5V)



### No.MP-203LN

4.75 × 1.7 DC PLUG  
EIAJ RC5320A TYPE3 電圧区分3  
(DC 6.3V ~ 10.5V)



### No.MC-5323

DC ADAPTOR CABLE L=1800mm  
4.75 × 1.7 DC PLUG  
EIAJ RC5320A TYPE3 電圧区分3  
(DC 6.3V ~ 10.5V)



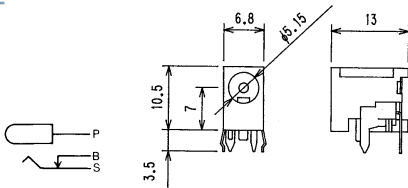
### No.MC-5323L

DC ADAPTOR CABLE L=1800mm  
4.75 × 1.7 DC PLUG  
EIAJ RC5320A TYPE3 電圧区分3  
(DC 6.3V ~ 10.5V)



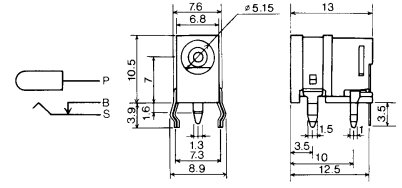
### No.M04-754A0

DC JACK FOR P.C.B.  
PLUG TYPE: 4.75 × 1.7  
EIAJ RC5320A TYPE3 電圧区分3  
(DC 6.3V ~ 10.5V 2A)



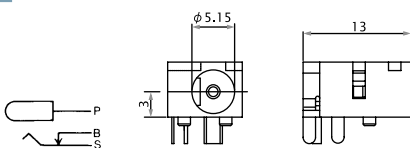
### No.M04-440A0

DC JACK FOR P.C.B.  
PLUG TYPE: 4.75 × 1.7  
EIAJ RC5320A TYPE3 電圧区分3  
(DC 6.3V ~ 10.5V 2A)



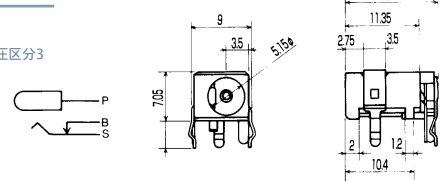
### No.M04-430DJ

DC JACK FOR P.C.B.  
PLUG TYPE: 4.75 × 1.7  
EIAJ RC5320A TYPE3 電圧区分3  
(DC 6.3V ~ 10.5V 2A)



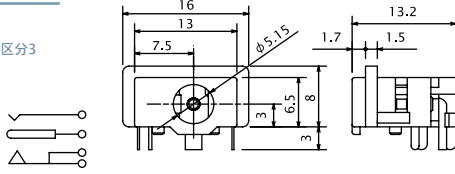
### No.M04-533B0

DC JACK FOR P.C.B.  
PLUG TYPE: 4.75 × 1.7  
EIAJ RC5320A TYPE3 電圧区分3  
(DC 6.3V ~ 10.5V 2A)



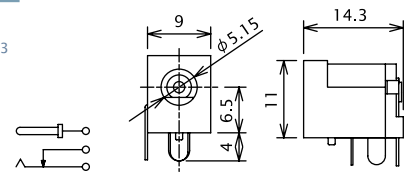
### No.M04-530DJ

DC JACK FOR P.C.B.  
PLUG TYPE: 4.75 × 1.7  
EIAJ RC5320A TYPE3 電圧区分3  
(DC 6.3V ~ 10.5V 2A)



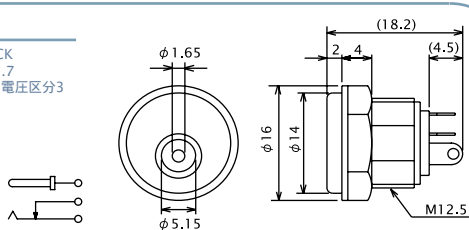
### No.M04-241DJ

DC JACK FOR P.C.B.  
PLUG TYPE: 4.75 × 1.7  
EIAJ RC5320A TYPE3 電圧区分3  
(DC 6.3V ~ 10.5V 2A)



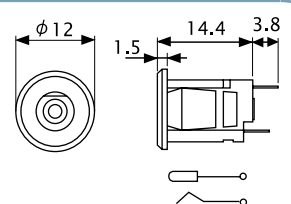
### No.MJ-13

PANEL MOUNT DC JACK  
PLUG TYPE: 4.75 × 1.7  
EIAJ RC5320A TYPE3 電圧区分3  
(DC 6.3V ~ 10.5V 2A)



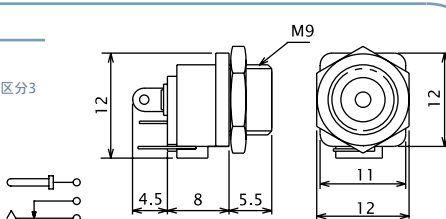
### No.MJ-63

SNAP-IN MOUNT DC JACK  
PLUG TYPE: 4.75 × 1.7  
EIAJ RC5320A TYPE3 電圧区分3  
(DC 6.3V ~ 10.5V 2A)



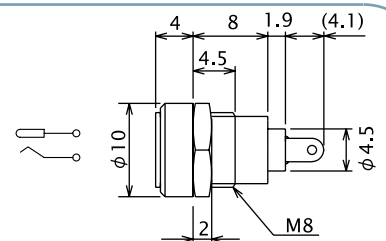
### No.MJ-43

PANEL MOUNT DC JACK  
PLUG TYPE: 4.75 × 1.7  
EIAJ RC5320A TYPE3 電圧区分3  
(DC 6.3V ~ 10.5V 2A)



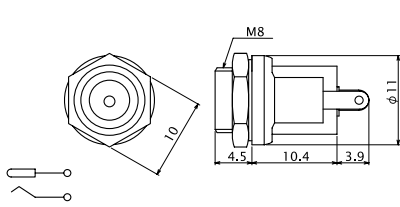
### No.MJ-18

PANEL MOUNT DC JACK  
PLUG TYPE: 4.75 × 1.7  
EIAJ RC5320A TYPE3 電圧区分3  
(DC 6.3V ~ 10.5V 2A)



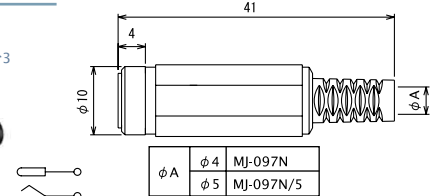
### No.MJ-73

PANEL MOUNT DC JACK  
PLUG TYPE: 4.75 × 1.7  
EIAJ RC5320A TYPE3 電圧区分3  
(DC 6.3V ~ 10.5V 2A)



### No.MJ-097N

DC INLINE JACK  
PLUG TYPE: 4.75 × 1.7  
EIAJ RC5320A TYPE3 電圧区分3  
(DC 6.3V ~ 10.5V 2A)





# DC PLUGS & JACKS

EIAJ RC5320A TYPE3

電圧区分3

適合品

RATING 定 格 : DC10.5V 2A

No. MC-5328

DC EXTENTION CABLE  
PLUG TYPE: 4.75×1.7  
EIAJ RC5320A TYPE3 電圧区分3  
(DC 6.3V ~ 10.5V 2A)



No. MJ-29

DC INLINE JACK FOR MOLDING  
PLUG TYPE: 4.75×1.7  
EIAJ RC5320A TYPE3 電圧区分3  
(DC 6.3V ~ 10.5V 2A)



*Marushin electric mfg. co., ltd*